

Research Ethics and Governance Metrics Project

Biannual Report for 2016



17/03/2016

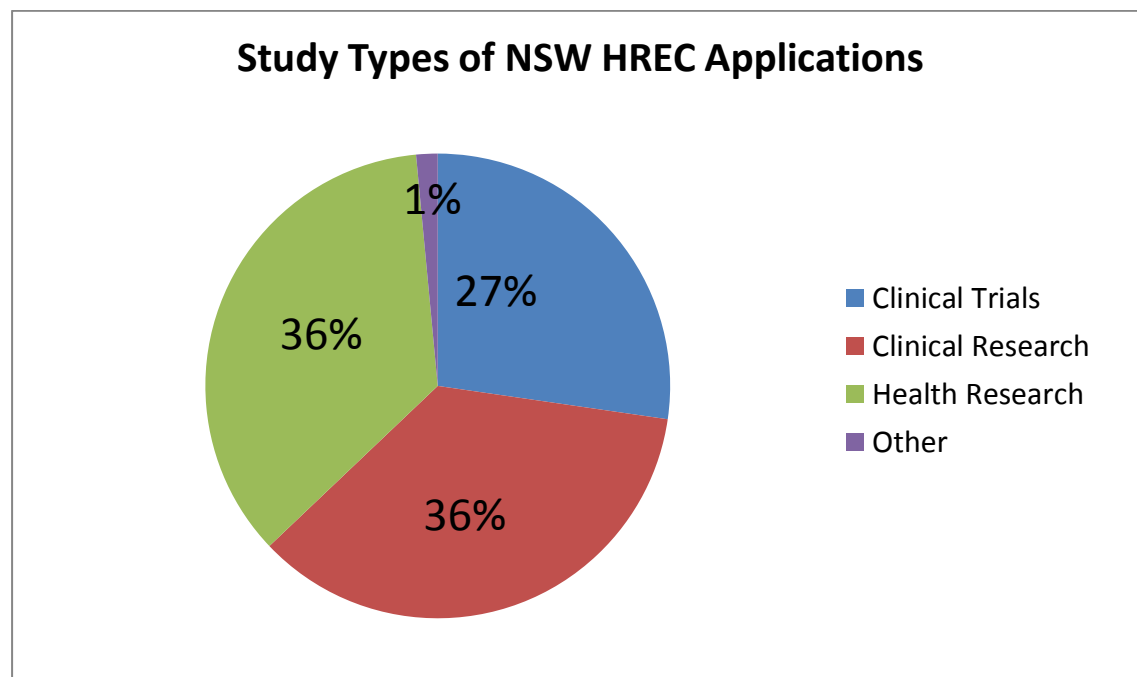
Table of Contents

METRIC 3: NSW HREC Submission Closing Date to NSW HREC Approval	2
Key Data: Human Research Ethics Application Review Timelines in NSW (with/without clock)	2
Summary Notes:	2
Performance of NSW Human Research Ethics Committees (HRECs):.....	3
Comparison of Human Research Ethics Application Review Timelines between NSW HRECs- Clinical Trials only:.....	4
Comparison of Human Research Ethics Application Review Timelines between NSW HRECs- Non-Clinical Trials:.....	5
METRIC 4: Date Valid SSA Application Received by the RGO to Site Authorisation	6
Key Data: Site Authorisation Timelines in NSW (with/without clock)	6
Summary Notes:	6
Performance of Site Specific Authorisation (SSAs):	7
Comparison of Site Specific Authorisation Timelines between Public Health Organisations in NSW- Clinical Trials only:.....	8
Comparison of Site Specific Authorisation Timelines between Public Health Organisations in NSW- Non-Clinical Trials:.....	9
Committee Names and Abbreviations:	10
Contact Details:	11

METRIC 3: NSW HREC Submission Closing Date to NSW HREC Approval

Key Data: Human Research Ethics Application Review Timelines in NSW (with/without clock)

		With Clock			Without Clock		
	Total	Mean	Median	Range	Mean	Median	Range
Clinical Trials	128	49	47	12-180	94	85	29-274
Non Clinical Trials	341	46	41	0-264	94	71	0-423
TOTAL	469	46	42	0-264	87	76	0-423



Summary Notes:

- 75% of the Clinical Trials approved less than 60 days by NSW HRECs between 01/07/2016-31/12/2016.
- According to Australian National Aggregate Statistics report (2014-2015), 82% of the commercial clinical trials are reviewed under 60 days.
- In 6 months period, RPAH approved the highest number of clinical trials (37 clinical trials).
- RPAH's Clinical Trial review performance is the lowest in the state (30%).

Performance of NSW Human Research Ethics Committees (HRECs):

All studies (excluding LNR) approved in NSW between 01/07/2016 and 31/12/2016.

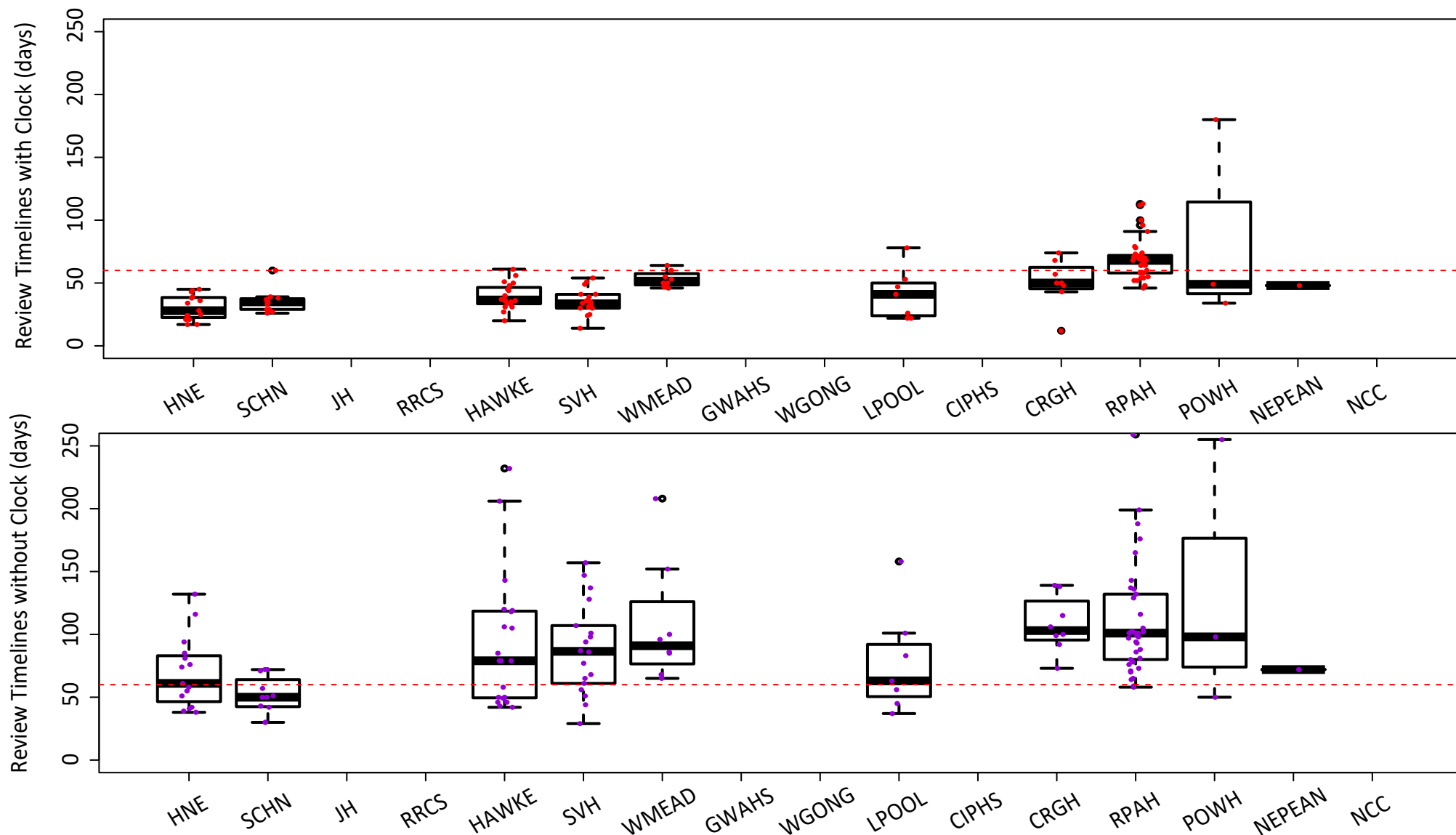
AURED committees	Total # of applications	Reviewed under 60 days	%	Total # of Clinical Trials	Reviewed under 60 days	%	Total # of Non-Clinical Trials	Reviewed under 60 days	%
HNE	63	63	100	15	15	100	48	48	100
SCHN	28	28	100	11	11	100	17	17	100
JH	5	5	100	N / A			5	5	100
RRCS	1	1	100	N / A			1	1	100
HAWKE	45	44	98	20	19	95	25	25	100
SVH	37	36	97	18	18	100	19	18	95
WMEAD	35	32	91	8	7	88	27	25	93
GWAHS	11	10	91	N / A			11	10	91
WGONG	9	8	89	N / A			9	8	89
LPOOL	38	33	87	7	6	86	31	27	87
CIPHS	19	13	68	N / A			19	13	68
CRGH	26	17	65	8	6	75	18	11	61
RPAH	105	64	61	37	11	30	68	53	78
POWH	38	20	53	3	2	67	35	18	51
NEPEAN	8	4	50	1	1	100	7	3	43
NCC	1	0	0	N / A			1	0	0
TOTAL	469	378	81	128	96	75	341	282	83

Performance Threshold:

Highly Performing	Underperforming	Not Performing
90% or better	≥ 75% and < 90%	<75%

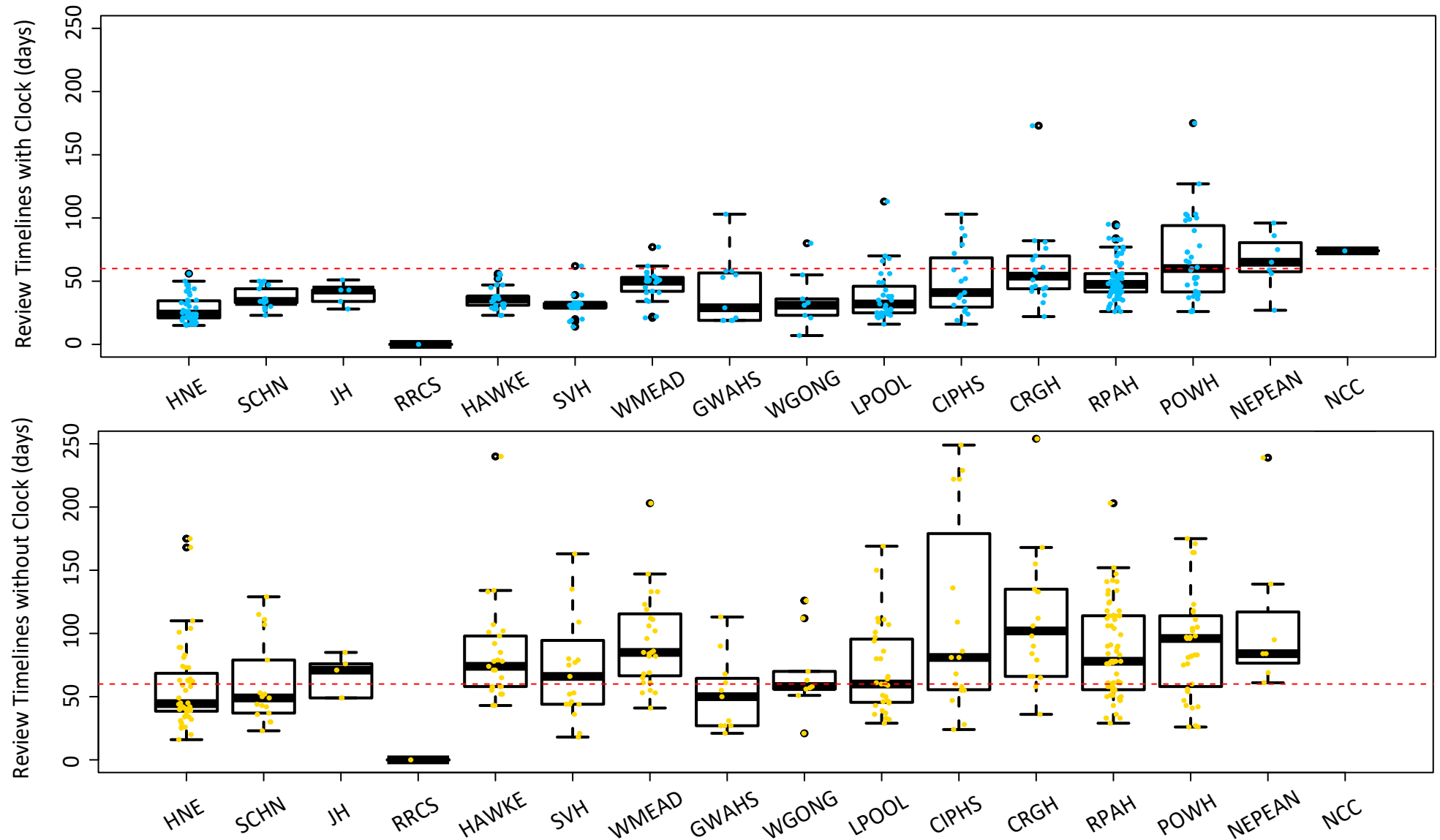
Comparison of Human Research Ethics Review Timelines between NSW HRECs - Clinical Trials:

Clinical Trials Approved in NSW between 01/07/2016 and 31/12/2016



Comparison of Human Research Ethics Review Timelines between NSW HRECs - Non-Clinical Trials:

Non-Clinical Trials Approved in NSW between 01/07/2016 and 31/12/2016

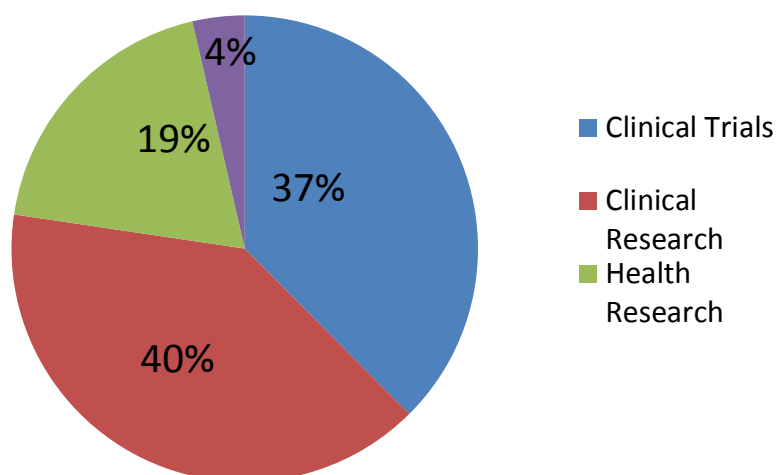


METRIC 4: Date Valid SSA Application Received by the RGO to Site Authorisation

Key Data: Site Authorisation Timelines in NSW (with/without clock)

		With Clock			Without Clock		
	Total	Mean	Median	Range	Mean	Median	Range
Clinical Trials	333	20	11	0-374	49	26	0-745
Non Clinical Trials	554	20	11	0-218	60	31	0-1118
TOTAL	887	46	42	0-374	56	29	0-1118

Study Types of NSW Site Specific Authorisation



Summary Notes:

- 81% of the Clinical Trials approved less than 30 days by NSW HRECs between 01/07/2016-31/12/2016.
- According to Australian National Aggregate Statistics report (2014-2015), 93% of the commercial clinical trials are authorised under 60 days without the clock. This report excluded the multi-jurisdictional studies.
- In 6 months period, LPOOL authorised the 3rd highest number of studies (105 studies, 38 of these were clinical trials).
- LPOOL Site Specific Authorisation performance is the lowest in the state (16%). Based on our initial consultation with the site, they have experienced difficulties in staff allocation.

Performance of Site Specific Authorisation (SSAs):

All studies (excluding LNR) authorised in NSW between 01/07/2016 and 31/12/2016.

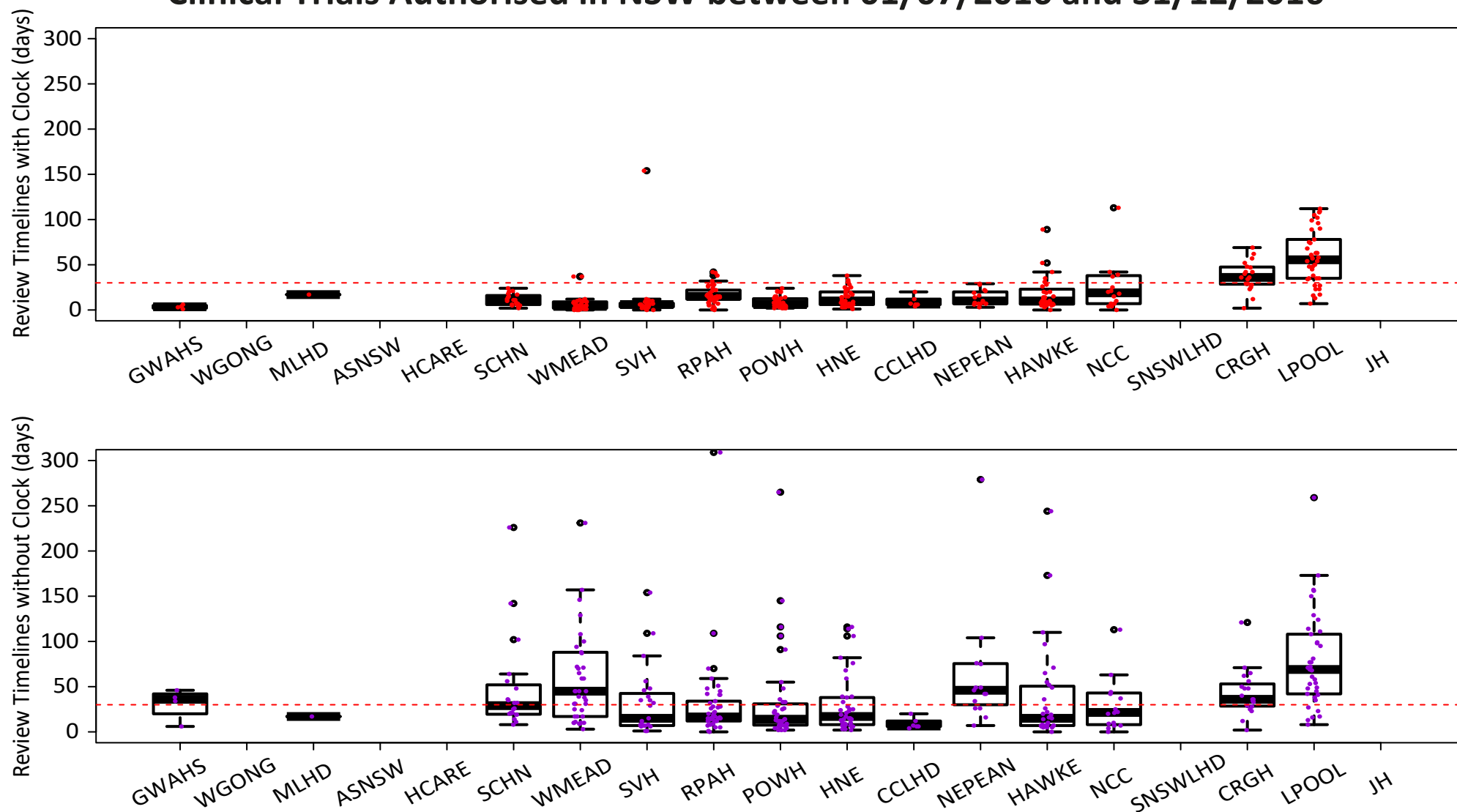
AURED committees	Total # of applications	Reviewed under 30 days	%	Total # of Clinical Trials	Reviewed under 30 days	%	Total # of Non-Clinical Trials	Reviewed under 30 days	%
GWAHS	17	17	100	4	4	100	13	13	100
WGONG	6	6	100	N /A			6	6	100
MLHD	5	5	100	1	1	100	4	4	100
ASNSW	1	1	100	N /A			1	1	100
HCARE	1	1	100	N /A			1	1	100
SCHN	60	58	97	20	20	100	40	38	95
WMEAD	116	112	97	42	40	95	74	72	97
SVH	52	50	96	23	22	96	29	28	97
RPAH	118	113	96	42	38	90	76	75	99
POWH	92	88	96	39	39	100	53	49	92
HNE	104	98	94	37	34	92	67	64	96
CCLHD	12	11	92	6	6	100	6	5	83
NEPEAN	39	35	90	15	15	100	24	20	83
HAWKE	70	58	83	31	25	81	39	33	85
NCC	28	19	68	16	11	69	12	8	67
SNSWLHD	3	2	67	N /A			3	2	67
CRGH	57	32	56	19	7	37	38	25	66
LPOOL	105	17	16	38	8	21	67	9	13
JH	1	0	0	N /A			1	0	0
TOTAL	887	723	82	333	270	81	554	453	82

Performance Threshold:

Highly Performing	Underperforming	Not Performing
90% or better	≥ 75% and < 90%	<75%

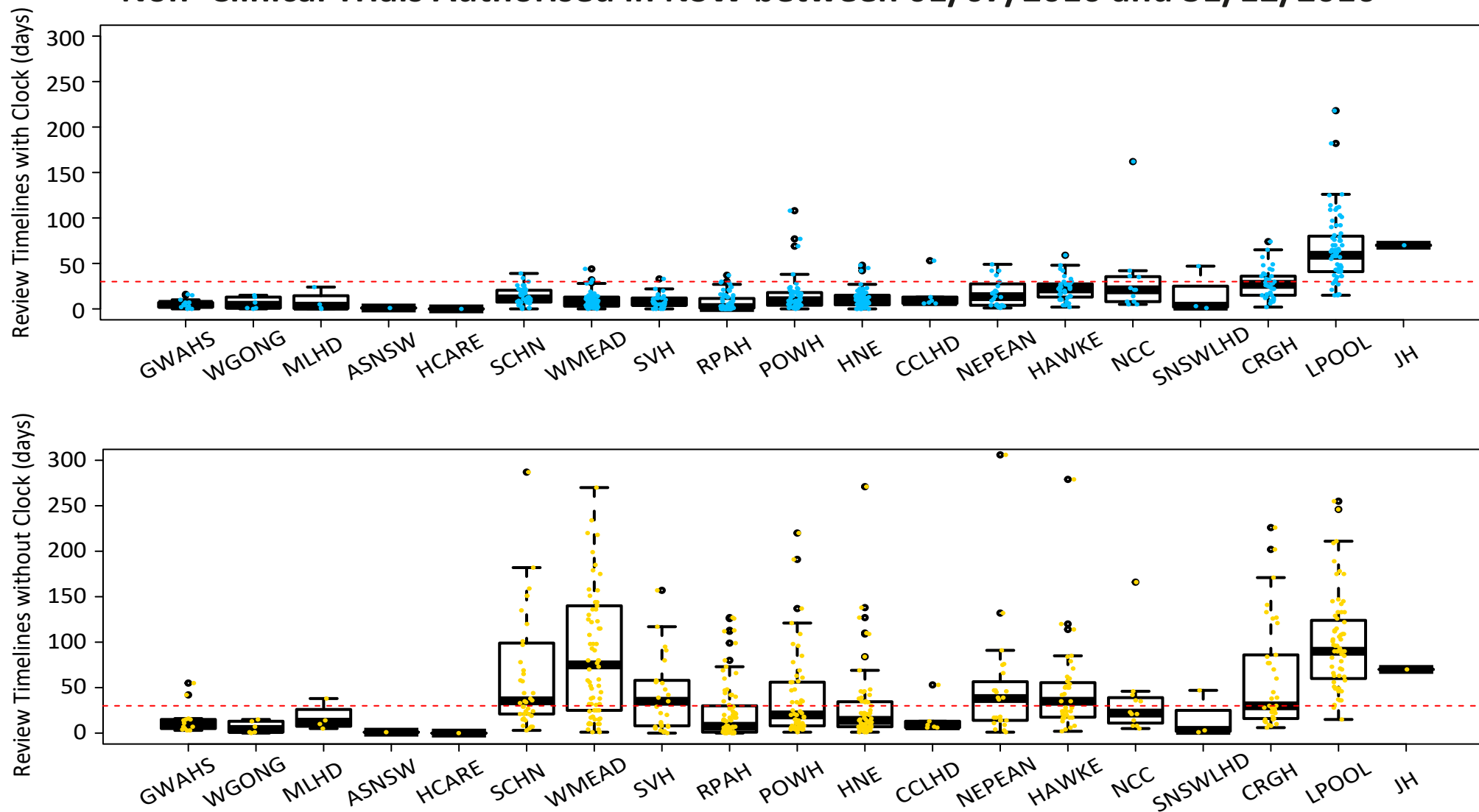
Comparison of Site Specific Authorisation Timelines between Public Health Organisations in NSW - Clinical Trials:

Clinical Trials Authorised in NSW between 01/07/2016 and 31/12/2016



Comparison of Site Specific Authorisation Timelines between Public Health Organisations in NSW - Non-Clinical Trials:

Non-Clinical Trials Authorised in NSW between 01/07/2016 and 31/12/2016



Committee Names and Abbreviations:

HREC	AU RED Code
NSW Population & Health Services Research Ethics Committee	CIPHS
SLHN Human Research Ethics Committee	CRGH
Northern Sydney LHD HREC	HAWKE
Hunter New England Human Research Ethics Committee	HNE
South Western Sydney LHD HREC	LPOOL
Nepean Blue Mountains LHD HREC	NEPEAN
South Eastern Sydney LHD HREC (Northern Sector)	POWH
Sydney Local Health District Ethics Review Committee (RPA Zone)	RPAH
Sydney Children's Hospitals Network Human Research Ethics Committee	SCHN
St Vincent's Hospital HREC	SVH
Joint University of Wollongong and Illawarra Shoalhaven Local Health District Health and Medical Human Research Ethics Committee	WGONG
Western Sydney Local Health District Human Research Ethics Committee	WMEAD
SSA	AU RED Code
Ambulance Service of NSW	ASNSW
Central Coast LHD	CCLHD
The Cancer Council NSW Ethics Committee	CCNSW
NSW Population & Health Services Research Ethics Committee	CIPHS
SLHN Human Research Ethics Committee	CRGH
Greater Western Human Research Ethics Committee	GWAHS
Northern Sydney LHD HREC	HAWKE
Hammond Care	HCARE
Hunter New England Human Research Ethics Committee	HNE
Justice Health & Forensic Mental Health Network Human Research Ethics Committee	JH
South Western Sydney LHD HREC	LPOOL
Murrumbidgee RGO	MLHD
North Coast NSW Human Research Ethics Committee	NCC
Nepean Blue Mountains LHD HREC	NEPEAN
South Eastern Sydney LHD HREC (Northern Sector)	POWH
Sydney Local Health District Ethics Review Committee (RPA Zone)	RPAH
Royal Rehabilitation Centre Sydney HREC	RRCS
Sydney Children's Hospitals Network Human Research Ethics Committee	SCHN
Southern NSW RGO	SNSWLHD
St Vincent's Hospital HREC	SVH
Joint University of Wollongong and Illawarra Shoalhaven Local Health District Health and Medical Human Research Ethics Committee	WGONG
Western Sydney Local Health District Human Research Ethics Committee	WMEAD

Note: Research Ethics and Governance Reform grant was not provided to the institutions shown in grey (CCNSW, HCARE and RRCS)

Contact Details:

James Cokayne

Principal Policy Officer

Research Ethics and Governance Unit

Office for Health and Medical Research

Tel (02) 9391 9920 |

jcoka@doh.health.nsw.gov.au

Hilal Varinli

Policy Officer

Research Ethics and Governance Unit

Office for Health and Medical Research

Tel (02) 9461 7344 | hilal.varinli@moh.health.nsw.gov.au