

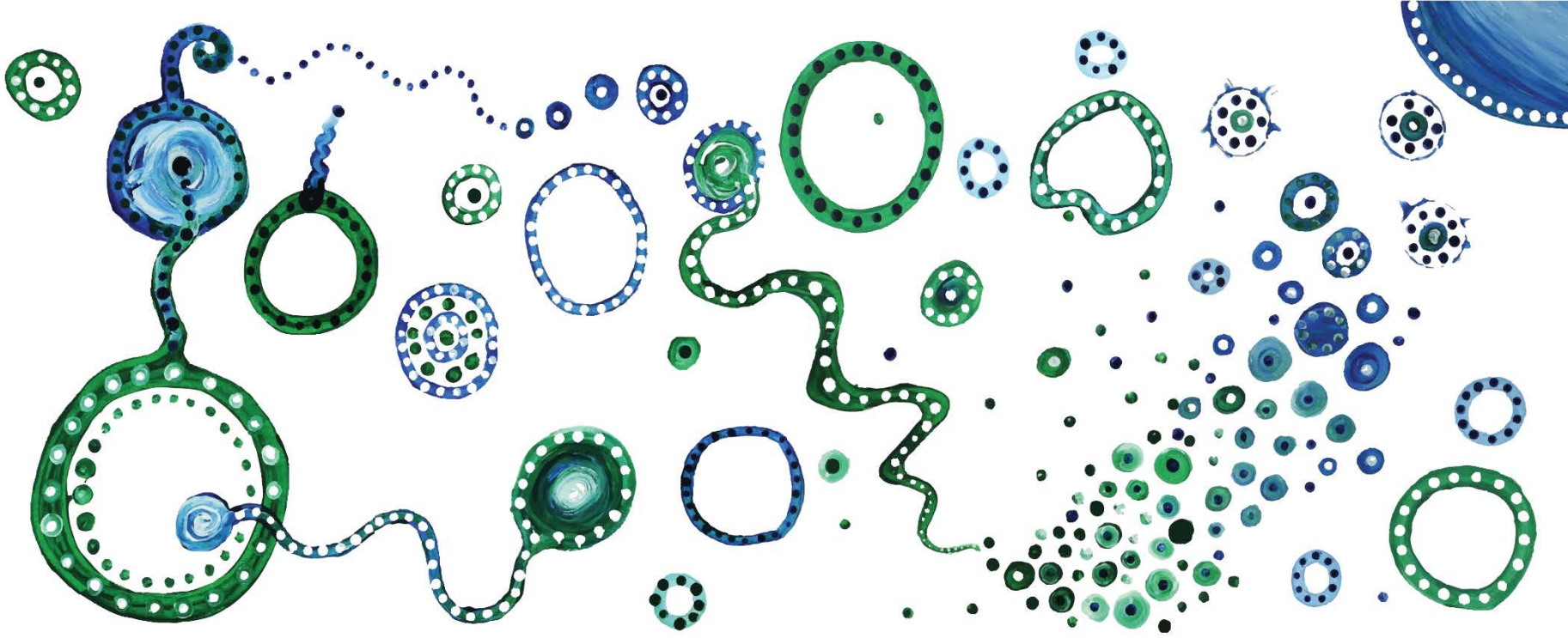
The Agency for Clinical Innovation

Presentation for the OHMR TRGS 2021 workshop

How to approach & partner with the NSW ACI



AGENCY FOR
**CLINICAL
INNOVATION**



ACI acknowledges the traditional owners of the land that we work on.

**We pay our respect to Elders past and present and extend that respect
to other Aboriginal peoples present here today.**

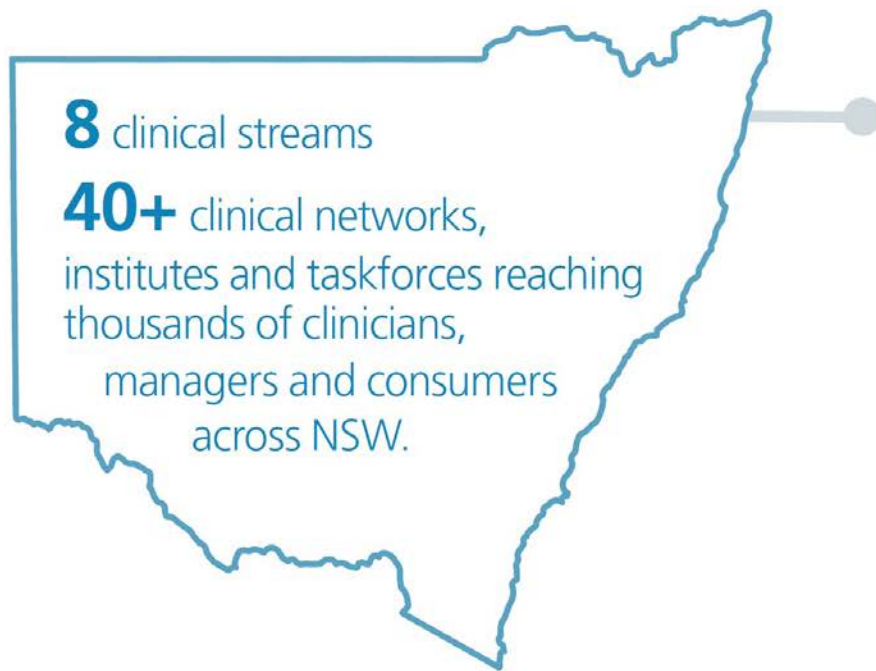
**Our vision is to create the future of healthcare,
and healthier futures for the people of NSW.**

**We are the lead agency for innovation in clinical care. We bring
patients, clinicians and managers together to support the
design and implementation of innovation in healthcare.**



AGENCY FOR
**CLINICAL
INNOVATION**

Our core functions



Our core functions:

- Clinical guidelines and models of care
- Patient engagement and co-design
- Clinical evidence generation and mobilisation
- Clinical innovation and research
- Clinical redesign
- Implementation support
- Evaluation and capability development.

Our focus on complex system challenges

- integrating care at the interface of hospital, primary, community & social care services
- delivering healthcare informed by shared-decision making & co-design
- reducing low-value clinical care & increasing better value care
- improving the experiences of care for Aboriginal people & culturally diverse communities
- creating new models of care for people living with mental & physical co-morbidities
- reducing over-diagnosis and over-treatment in frail & older people
- implementing novel diagnostic & therapeutic technologies in clinical care
- embedding analytic tools to support clinical decisions & reflective practice.

Strategic directions

Our five key directions



1. Engaging patients, clinicians and managers

- person-centred innovations
- fostering a stronger clinical voice
- empowering patients, carers, families and communities



2. Responding with evidence to system challenges

- promoting evidence-based innovation
- responding to clinical variation
- adopting a pipeline of innovation



3. Fostering a learning healthcare system

- building capacity for innovation
- seeking synergies to align efforts
- leveraging evaluation and research



4. Supporting creativity and innovation

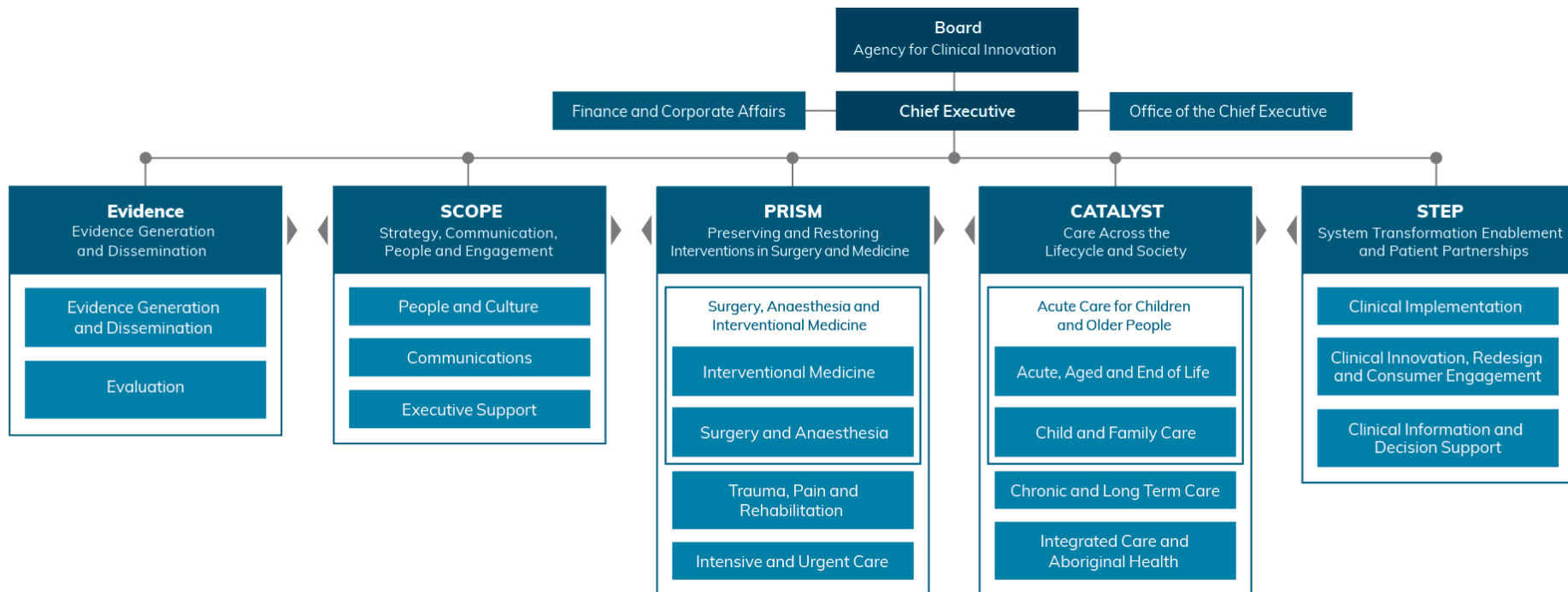
- taking a flexible and rigorous approach
- focusing on impactful communications
- catalysing market innovations



5. Investing in our people and developing collective leadership

- developing talent and teams
- creating a culture of curiosity and exploration
- mobilising our workforce

Our structure



Clinical Networks & Institutes

Aboriginal Chronic Conditions Network

Aged Health Network

Anaesthesia Perioperative Care Network

Blood & Marrow Transplant Network

Blood & Marrow Transplant Quality
Management Service

Brain Injury Rehabilitation Network

Burn Injury Network

Cardiac Network

Chronic Care for Aboriginal People
Program

Chronic Care Network

Clinical Genetics Network

Diabetes & Endocrine Network

Drug & Alcohol Network

Emergency Care Institute
NSW Agency for Clinical Innovation

Frailty Taskforce

Gastroenterology Network

Gynaecological Oncology Network

Institute of Trauma & Injury Management

Intellectual Disability Network

Intensive Care NSW

Maternity & Neonatal Network

Mental Health Network

Musculoskeletal Network

Nuclear Medicine Network

Nutrition Network

Ophthalmology Network

Paediatric Network

Pain Management Network

Palliative Care Network

Primary Healthcare

Radiology Network

Rehabilitation Network

Renal Network

Respiratory Network

Rural Health Network

State Spinal Cord Injury Service

Stroke Network

Surgical Services Taskforce

Telehealth

Transition Care Network

Urology Network

Violence Abuse & Neglect Network

Wound Initiative

Partnership roles

- Project advisory roles (e.g. project advisory committee).
- Connecting with clinicians, healthcare staff, & other parts of NSW Health.
- Assisting with developing project materials.
- Data.
- Implementation & dissemination plans.
- Other contributions as per ACI Networks expertise.

More information



- Visit our website for details about the ACI Networks, Taskforces, & Institutes: <https://www.aci.health.nsw.gov.au/networks> & contact the relevant Network Managers.
- For general research enquiries, please see <https://aci.health.nsw.gov.au/make-it-happen/research> or contact aci-research@health.nsw.gov.au.
- Proposals requesting partnerships from multiple agencies will be coordinated for review with those other agencies. Please approach all agencies as soon as possible.



AGENCY FOR
**CLINICAL
INNOVATION**

1 Reserve Rd
St Leonards NSW 2065

T + 61 2 9464 4666

F + 61 2 9464 4728

aci-info@health.nsw.gov.au

www.aci.health.nsw.gov.au

 [@nswaci](https://twitter.com/nswaci)