

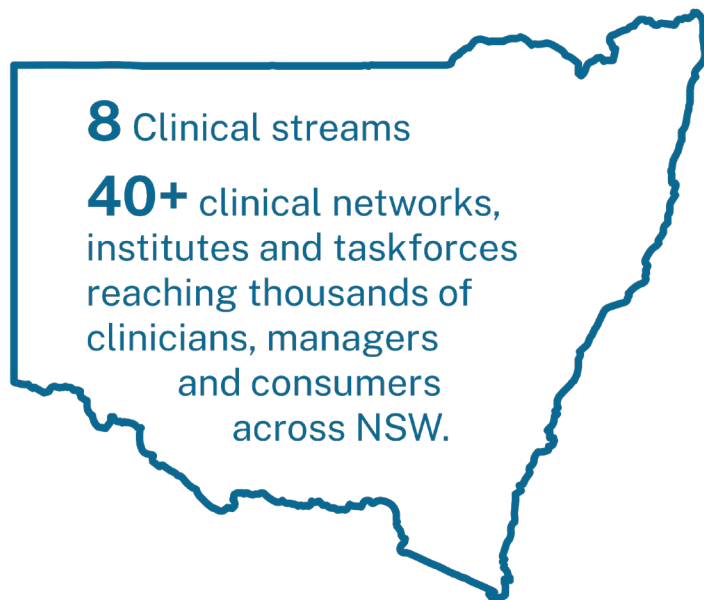
# The Agency for Clinical Innovation

Presentation for the OHMR TRGS 2025 workshop

How to approach & partner with the NSW ACI



AGENCY FOR  
**CLINICAL  
INNOVATION**



- 40+ clinical networks with active engagement from 5,000+ clinicians
- Evidence generation and mobilisation
- Clinical guidelines and models of care
- Patient engagement and co-design
- Clinical redesign and implementation support
- Translational research – research translation
- Evaluation and capability development

## Our priority challenges (Strategic Plan 2023-2026)

- Integrating care for patients at the interface of hospital, primary, community and social care services
- Reducing unwarranted clinical variation and promoting high-value care
- Redesigning healthcare to facilitate the adoption of new health technologies, including new therapies and clinical processes
- Implementing virtual care and digitally-enabled models of care
- Supporting equity in access and outcomes of care
- Delivering person-centred and culturally appropriate care
- Fostering sustainability in healthcare.

## Our structure – 2 key directorates

- **Clinical Engagement and Operational Programs:**
  - 40 clinical networks, institutes and taskforces grouped into five clinical streams.
  - Networks engage across the system to uncover and showcase innovations, pilot and tests ideas, and take a portfolio approach to clinical innovation that improves the healthcare experience and outcomes for patients and clinicians.
  - A multidisciplinary Program Accelerator stream supports the networks to fast-track high-priority projects.

## Our structure – 2 key directorates

- **Intelligence and Support for Innovation, Transformation and Evaluation:**
  - Brings together our evidence, evaluation, design, data and digital health teams.
  - These teams support our clinical networks and the wider health system to innovate.

## Clinical Networks & Institutes

Aboriginal Chronic Conditions

Aged Health

Alcohol and Other Drug

Anaesthesia Perioperative Care

Blood and Marrow Transplant +

Cellular Therapies

Brain Injury Rehabilitation

Burn Injury

Cardiac

Chronic Wound

Clinical Genetics

Diabetes and Endocrine

Emergency Care Institute

End of Life and Palliative Care

Frailty Taskforce

Gastroenterology

Gynaecological Oncology

Intellectual Disability

Intensive Care NSW

Maternity and Neonatal

Medical Imaging

Menopause Initiative

Mental Health

Musculoskeletal

Nutrition

Ophthalmology

Paediatric

Pain Management

Patient Reported Measures

Rehabilitation

Renal

Respiratory

Rural Health

Spinal Cord Injury Service

Stroke

Surgical Care

Transition Care

Trauma and Injury Management

Urology

Violence, Abuse and Neglect

Virtual Care

## Partnership roles

- Project advisory roles (e.g. project advisory committee).
- Connecting with clinicians, healthcare staff, and other parts of NSW Health.
- Assisting with developing project materials, including co-design.
- Access to data.
- Implementation and dissemination plans.
- Other contributions as per ACI Networks expertise.

## Partnership process

Approach us as early as possible, to allow us to assess:

- Alignment with the ACI Strategy.
- Alignment with specific priorities within the partnering ACI network, institute or team.
- The capacity of ACI staff to support with the initiative.
- The planned research addresses a key gap for ACI.
- Alignment with any aspects of the ACI's "research pyramid" to promote innovation or do research (see the ACI Strategy).

Also allows ACI staff time to provide feedback to your proposal.



## More information



- Visit our website for details about the ACI Networks, Taskforces, & Institutes: <https://www.aci.health.nsw.gov.au/networks> & contact the relevant Network Managers.
- For general research enquiries, please see <https://aci.health.nsw.gov.au/support-for-innovation/research> or contact [aci-research@health.nsw.gov.au](mailto:aci-research@health.nsw.gov.au).
- Proposals requesting partnerships from multiple agencies will be coordinated for review with those other agencies. Please approach all agencies as soon as possible.

- Other relevant ACI resources:
  - Working with consumers: <https://aci.health.nsw.gov.au/support-for-innovation/working-with-consumers>
  - Redesign and change management: <https://aci.health.nsw.gov.au/support-for-innovation/redesign-change-management>
  - Implementation support: <https://aci.health.nsw.gov.au/support-for-innovation/implementation>
  - Data requests: <https://aci.health.nsw.gov.au/support-for-innovation/data-requests>



AGENCY FOR  
**CLINICAL  
INNOVATION**

1 Reserve Rd  
St Leonards NSW 2065

T + 61 2 9464 4666

F + 61 2 9464 4728

[aci-info@health.nsw.gov.au](mailto:aci-info@health.nsw.gov.au)

[www.aci.health.nsw.gov.au](http://www.aci.health.nsw.gov.au)

 [@nswaci](https://twitter.com/nswaci)