

eHealth NSW

# Partnering with eHealth NSW

The front door for Digital Health research projects

**Sofia Haidar-Blake**

Clinical Engagement and Patient  
Safety, eHealth NSW



2023 | Version 01



## Acknowledgement of Country

I would like to begin by acknowledging the Traditional Custodians of the land on which we meet today, and pay my respects to their Elders past, present and future.

I extend that respect to Aboriginal and Torres Strait Islander colleagues here today.

# eHealth NSW

## VISION:

**A digitally enabled and integrated health system delivering patient centred health experiences and quality health outcomes**

- *Organisations and health system performance is optimised and informed by eHealth*
- *Our people are assisted by eHealth to make effective decisions and in the delivery of integrated care*
- *Patients are well informed and supported by eHealth in achieving their health objectives*



## eHealth Strategy for NSW Health

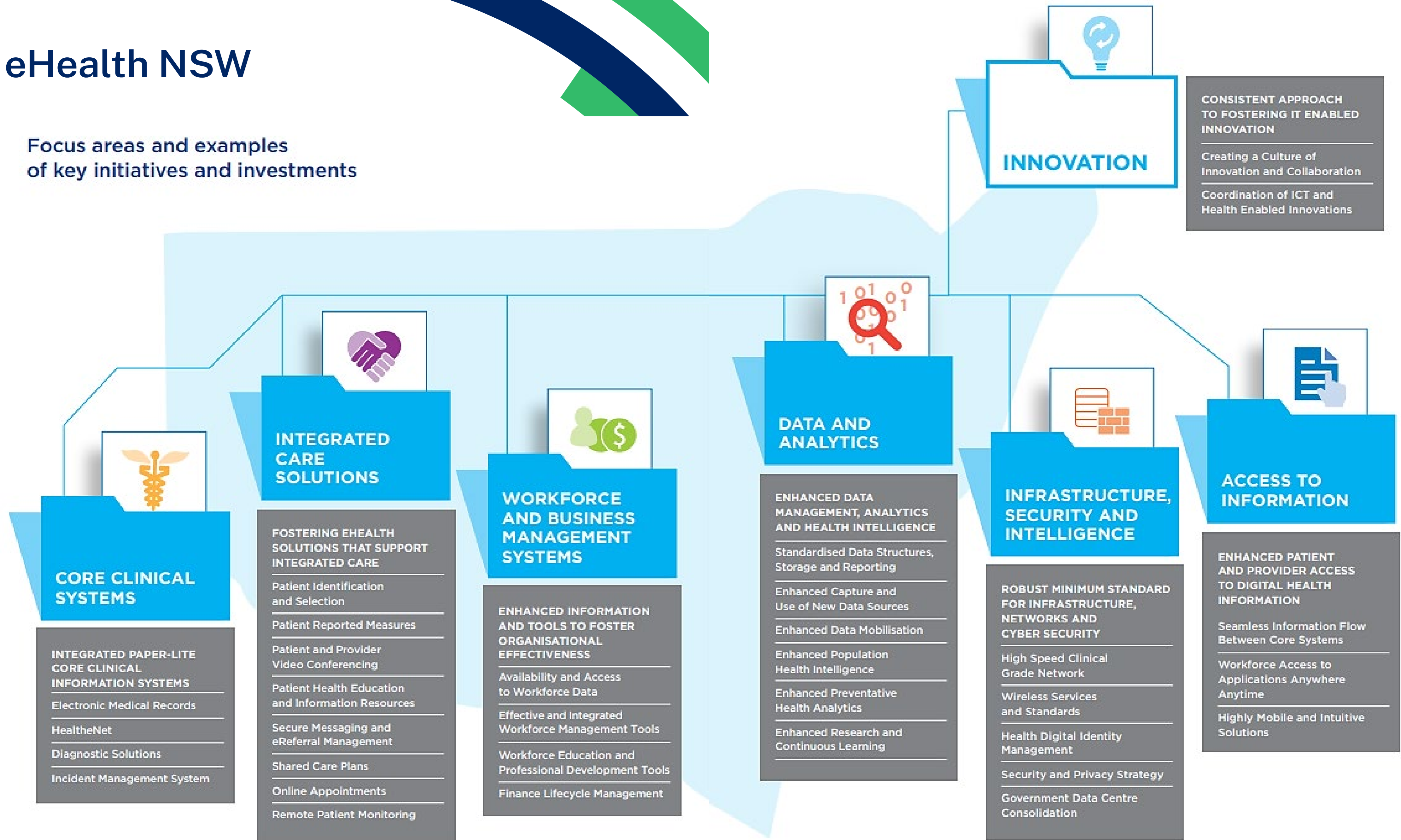
2016-2026

A DIGITALLY ENABLED AND INTEGRATED HEALTH SYSTEM  
DELIVERING PATIENT-CENTRED HEALTH EXPERIENCES  
AND QUALITY HEALTH OUTCOMES



# eHealth NSW

Focus areas and examples of key initiatives and investments



## eHealth NSW Strategic Priorities

Virtual Care and  
Telehealth

Integration and  
interoperability

Future proofing existing  
systems and architecture

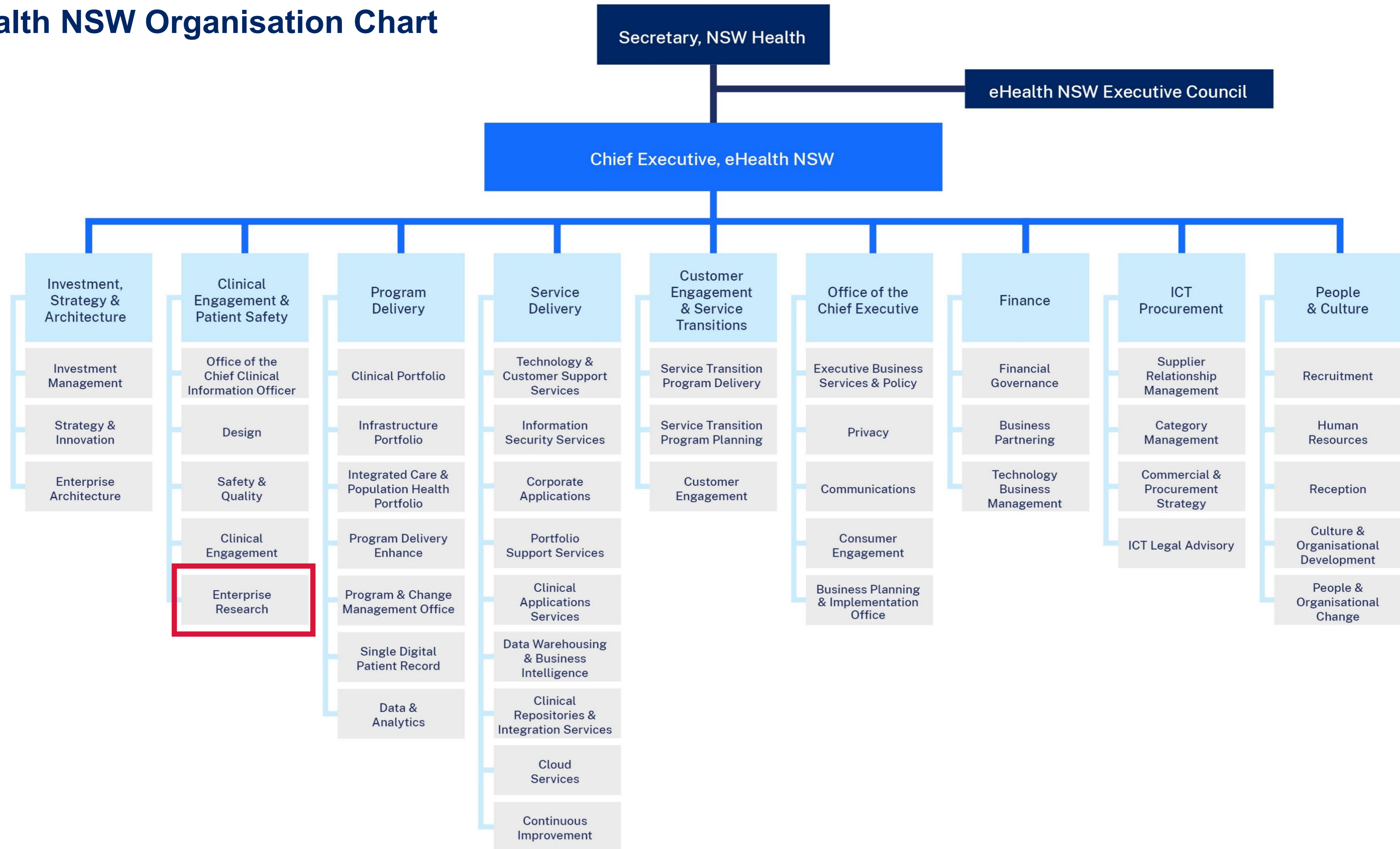
Resilience and  
Cybersecurity

Advancing real-time  
analytics

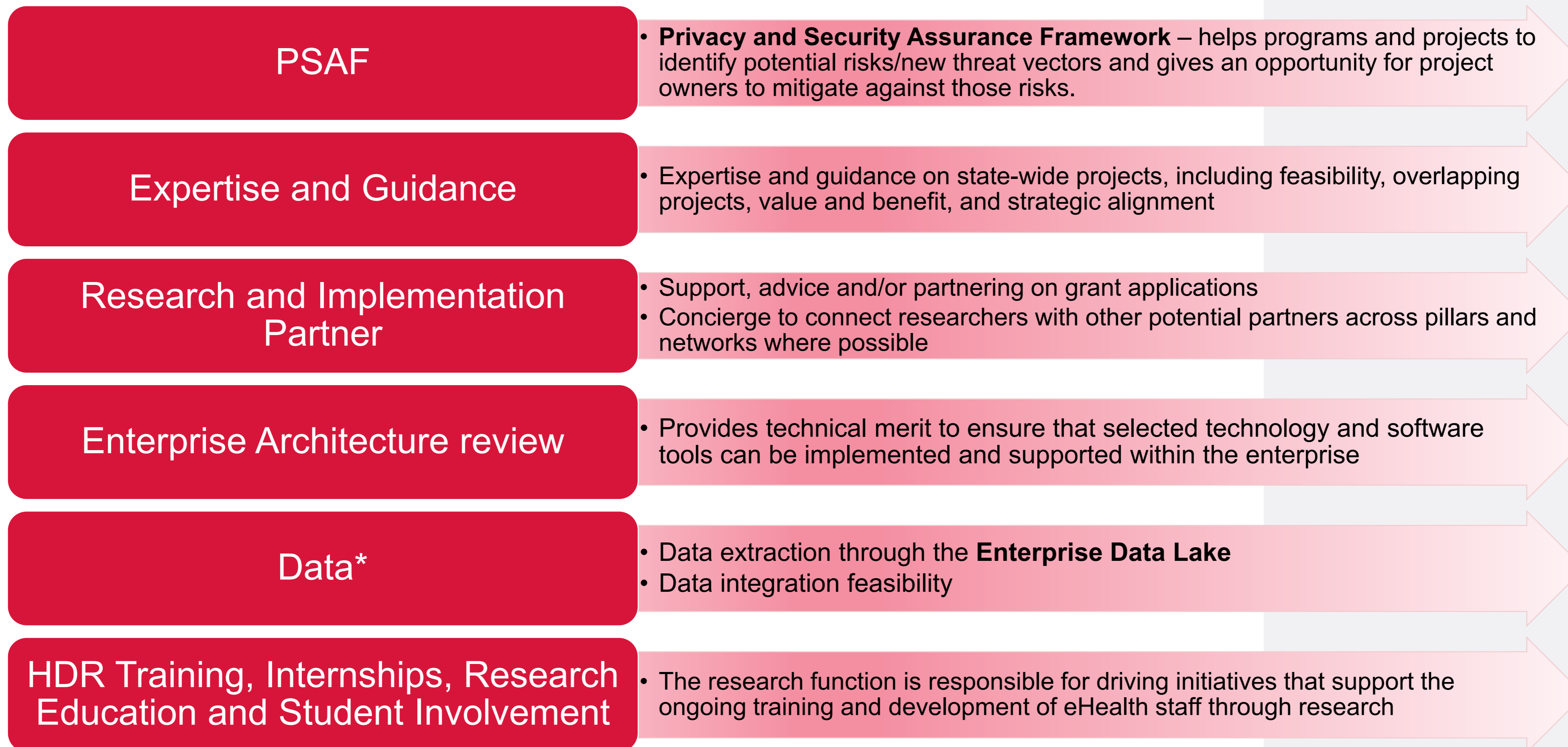
Supporting NSW  
Health's strategic  
initiatives including Value  
Based Healthcare, and  
empowering consumers,  
patients and staff.

# eHealth NSW

## eHealth NSW Organisation Chart



## Benefits of coordinating with eHealth NSW



\* eHealth is not responsible for the governance of data, and separate approvals must be obtained from Data Custodians prior to eHealth undertaking extraction. Requests are assessed against the Five Safes Framework.

# Partnership Value Considerations

In assessing the value of a project or partnership, consideration is applied to the following and internal consultation is undertaken to ensure that the following objectives are met:

- Strategic alignment
- Financial Considerations including feasibility
- Technical Security Considerations including Privacy and Assessment Framework Assessment (PSAF)
- Technical feasibility considerations, including data accessibility/extract
- Privacy and Impact Assessment (PIA)
- Resourcing considerations and their availability for the project
- Future prospect considerations and the potential for future growth or funding opportunities
- The potential research impact of the project
- Clinical Safety and Quality
- Ethical considerations and the need for any site-specific approvals
- Intellectual Property (IP) and Commercialisation Considerations
- Usability and Accessibility of the potential tool or project outcome
- Existing or duplicate initiatives



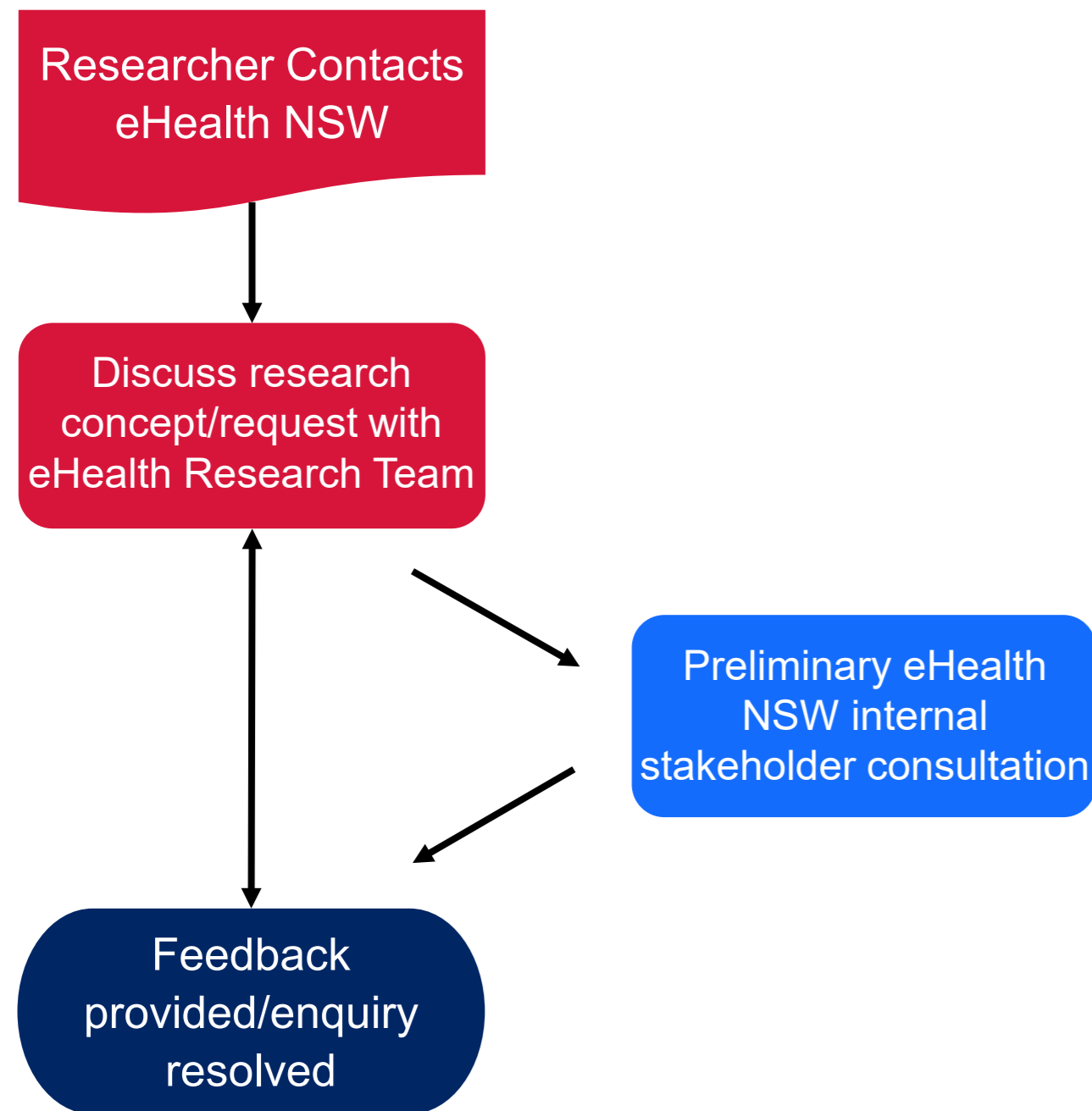
## Knowledge Domains Consulted to Support Decision Making:

- Program Delivery
- Service Delivery
- Innovation, Strategy, Architecture
- Security and Privacy
- Data Governance
- Patient Safety, Quality and Care
- Human Centred Design

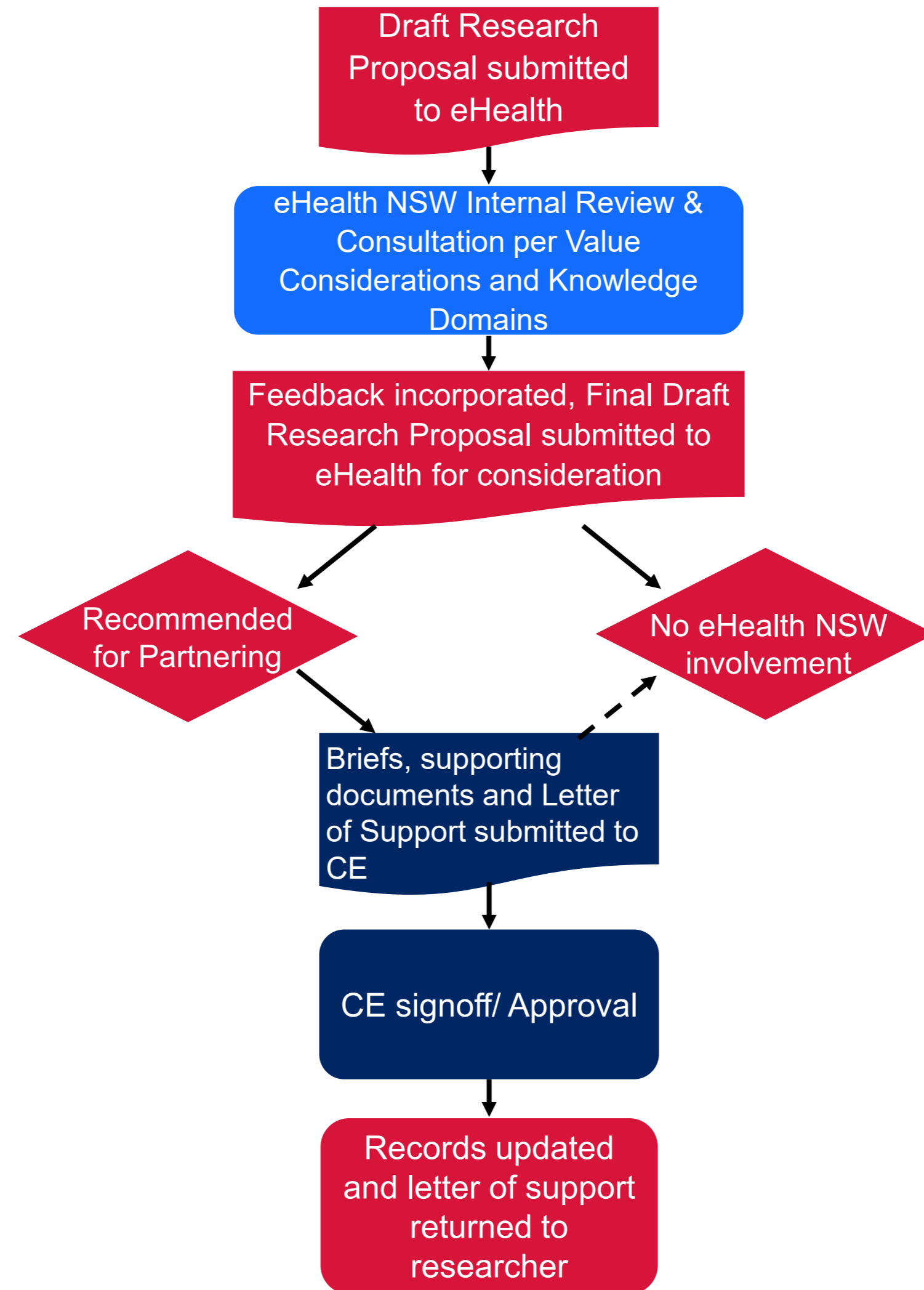


# Flowchart for Research Enquiries

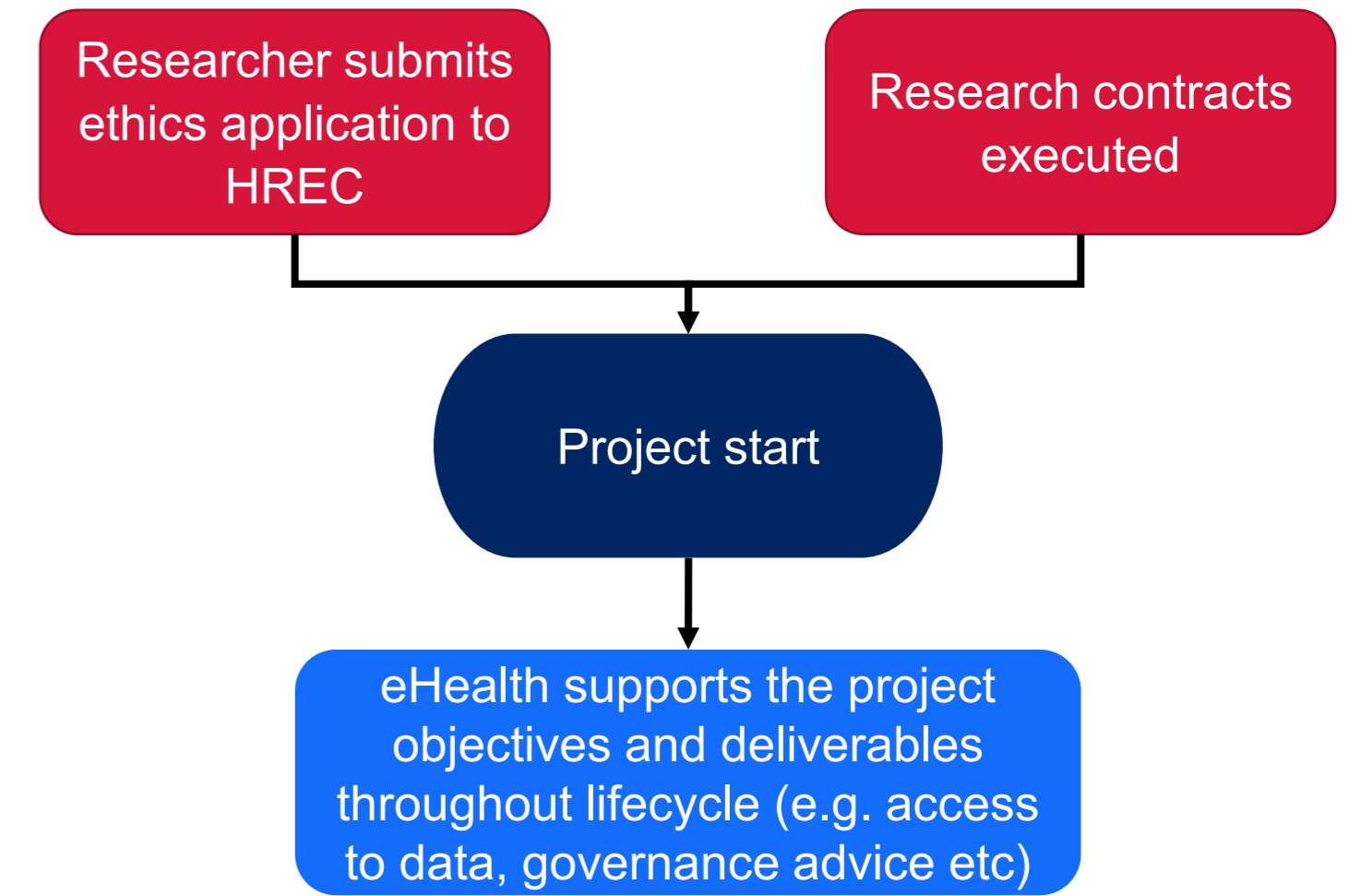
## Enquiry Phase



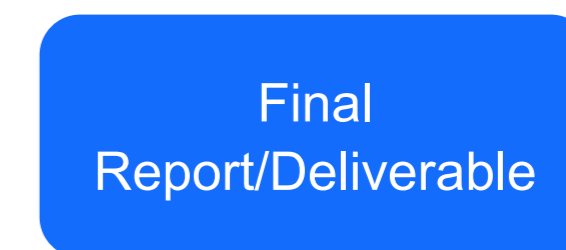
## Consultation and Review Phase



## Delivery Phase (Project Awarded)



## Project Close-out Phase



# Thank you

Questions and Comments?