

# TRGS

## Engaging with the Centre for Aboriginal Health

---

**Tara Smith, Medical Advisor**  
**Centre for Aboriginal Health**

March 2024

**The Hon. Ryan Park MP**  
Minister for Health, Minister for Regional Health

**The Hon. Rose Jackson MLC**  
Minister for Mental Health

**The Hon. David Harris MP**  
Minister for Medical Research

Centre for Aboriginal Health  
Executive Director  
**Geri Wilson-Matenga**

Secretary, NSW Health  
**Ms Susan Pearce AM**

Office of the Secretary  
Executive Director  
**Kate Pritchett**  
Internal Audit

**Chief Health Officer**  
Deputy Secretary  
Population and Public Health  
**Dr Kerry Chant AO PSM**

Centre for Alcohol and Other Drugs

Centre for Epidemiology and Evidence

Centre for Oral Health Strategy

Centre for Population Health

Office of the Chief Health Officer

Health Protection NSW (HSSG)

**Deputy Secretary**  
Financial Services and Asset Management and Chief Financial Officer  
**Alfa D'Amato**

Asset Management

Corporate Services and Business Improvement

Financial Accounting, Policy, Insurance and Revenue

Financial Data Analytics, Reporting and Governance

Strategic Procurement - Chief Procurement Officer

System Financial Performance - Deputy Chief Financial Officer

Activity Based Management (HSSG)

**Deputy Secretary**  
People, Culture and Governance  
**Phil Minns**

Executive and Ministerial Services

Legal and Regulatory Services - General Counsel

Nursing and Midwifery - Chief Nursing and Midwifery Officer

Strategic Communications and Engagement

Workforce Planning and Talent Development

Workplace Relations

**Deputy Secretary**  
Health System Strategy and Patient Experience  
**Deb Willcox AM**

Government Relations

Health and Social Policy

Mental Health

Strategic Reform and Planning

Patient Experience

**Deputy Secretary**  
System Sustainability and Performance  
**Matthew Daly**

System Information and Analytics

System Management

System Purchasing

System Performance Support (HSSG)

**Deputy Secretary**  
Regional Health  
**Luke Sloane**

Strategy, Governance and Delivery

Information and Performance Support

**Deputy Secretary**  
Clinical Innovation and Research  
Chief Executive, Agency for Clinical Innovation  
**Dr Jean-Frédéric Levesque**

Office for Health and Medical Research

Agency for Clinical Innovation (P)

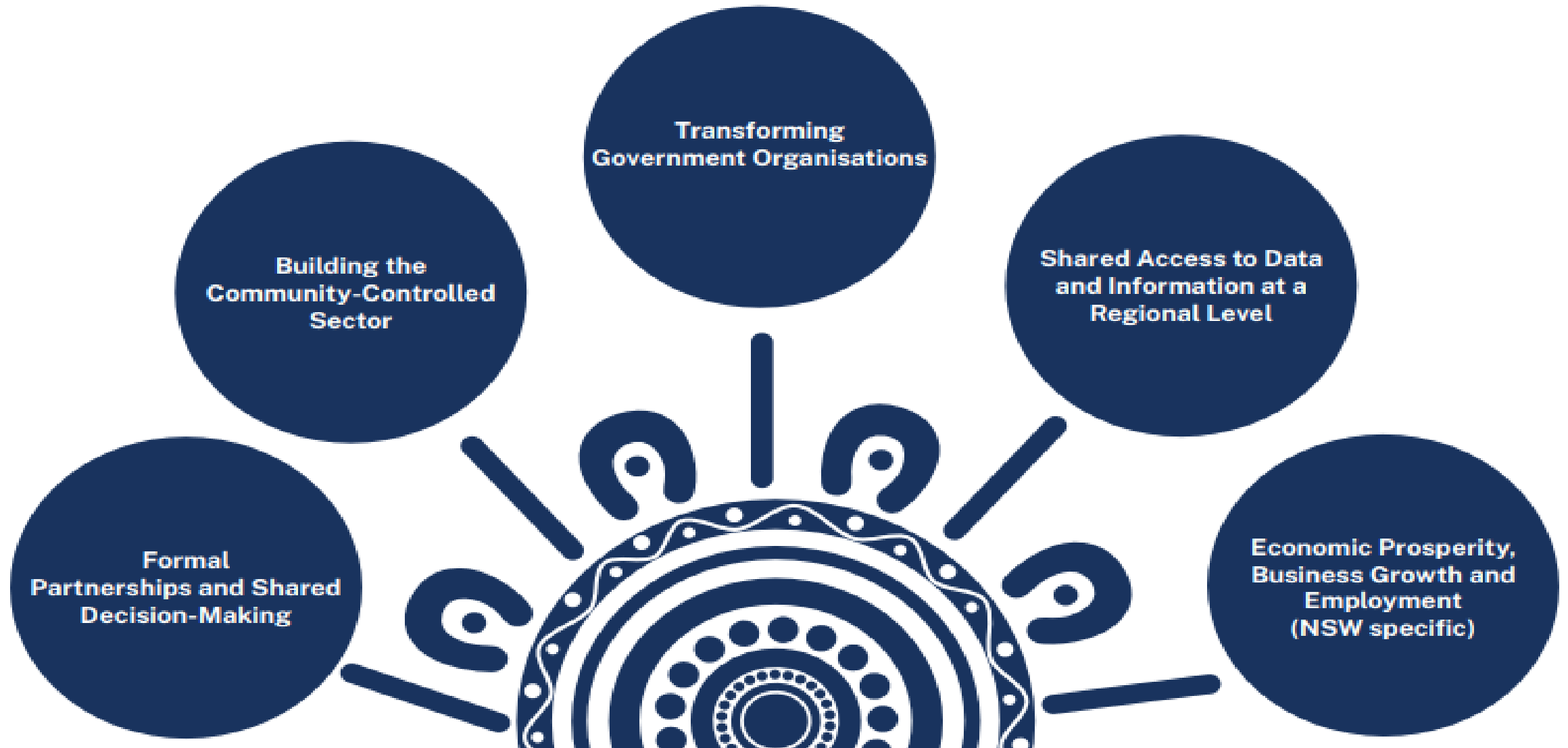
**State Health Services**  
Functional Area Co-ordinator  
**Wayne Jones**

# Centre for Aboriginal Health priorities

- Embedding elements of the National Agreement on Closing the Gap into the NSW Health system
- Review and Refresh of the Aboriginal Health Plan
- Development of the NSW Aboriginal Health Governance and Accountability Framework
- NSW Racism Accountability Framework
- Senior Executive Forum Aboriginal Health transformative agenda and related actions for LHDs, SHNs and Pillars
- Strengthening relationships with the Aboriginal Community Controlled Sector.
- Aboriginal Health Dashboards & NSW Health system performance
- Stolen Generations Survivors following NSW Health Formal Apology
- Development of a Ministry of Health Reconciliation Action Plan



# Closing the Gap : Priority Reform Areas



# Closing the Gap: Socio-Economic Outcomes

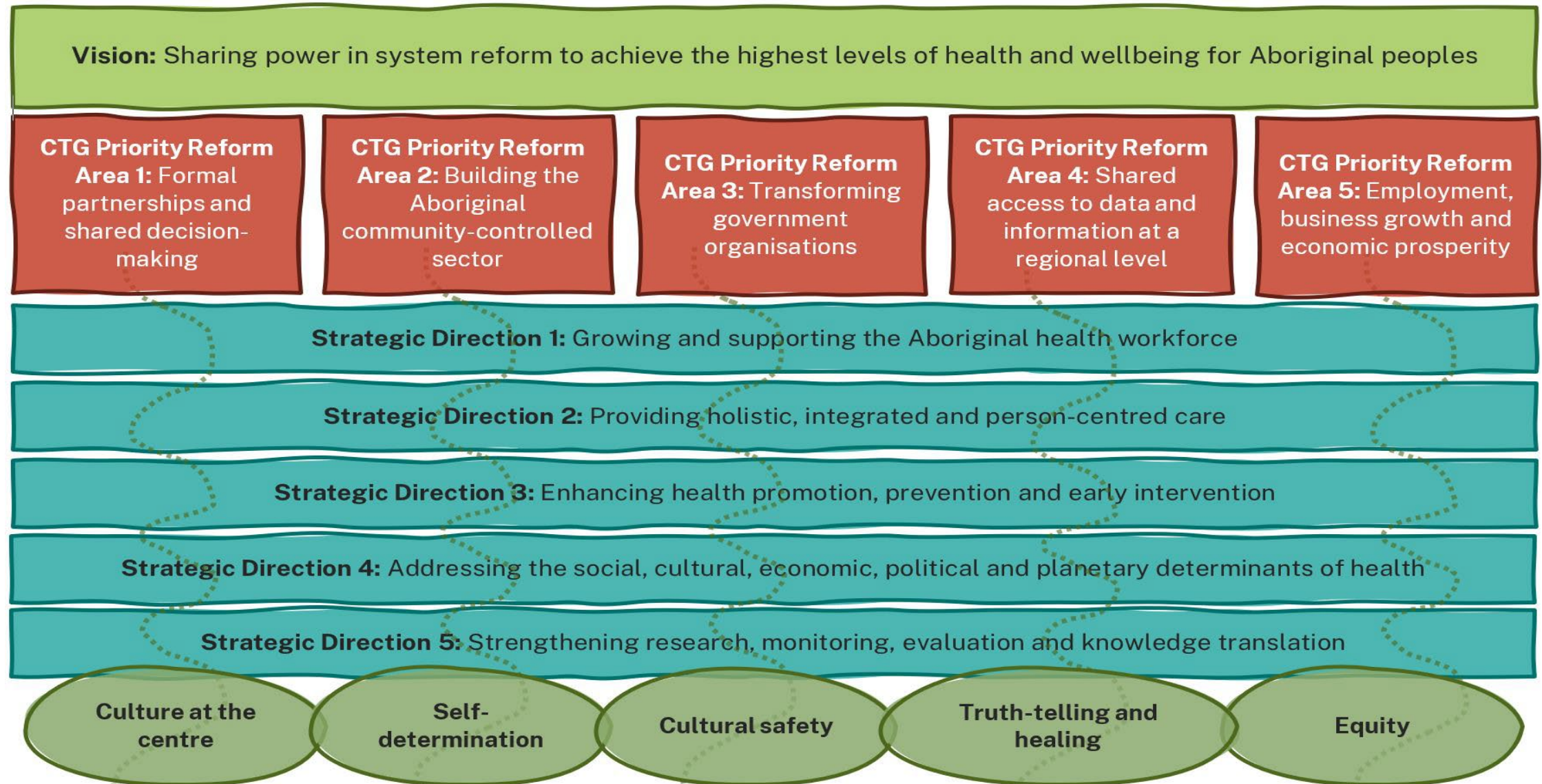


## Health responsibilities under the NSW Implementation Plan

- Socio-Economic Outcome 1: Aboriginal people enjoy long and healthy lives
- Socio-Economic Outcome 2: Aboriginal children are born healthy and strong
- Socio-Economic Outcome 4: Aboriginal children thrive in their early years
- Socio-Economic Outcome 14: Aboriginal people enjoy high levels of social and emotional wellbeing

# The vision for Aboriginal Health in the NSW Health system

## Aboriginal Health Plan Framework



# “Strengthening Research, evaluation, monitoring and knowledge translation”

## Conducting Translational Research with Aboriginal Communities or People

1. Conceptualising the research question
2. Seeking advice
3. Complete an AHIS
4. Engaging the community
5. Aboriginal expertise in research projects
6. Data sovereignty and research integrity
7. Ethical considerations



*(Also “Quick Guide on Undertaking Appropriate Aboriginal Health Research”)*

## AHMRC Ethics Resources



# Completing an Aboriginal Health Impact Statement

## Apply an 'Aboriginal health lens' to your research by considering:

- Health context for Aboriginal people
- Potential impact of your research on Aboriginal people
- Level and nature of engagement with Aboriginal people necessary

## Requirement for all full TRGS applications





# Engaging with the Centre for Aboriginal Health

---

- Think about how we can help your project by considering:
  - The Aboriginal Health perspectives your research is addressing (access, care type, models of care)
  - How this relates to other work in the Aboriginal Health space (CTG, NSW Health Aboriginal Health Plans, priority work)
  - What you would like from the Centre for Aboriginal Health (advice/governance participation/introductions)
- An AHIS is an excellent tool to help think this through, and can be a living document, so start early
- If you would like assistance with engagement consider who and what sort of input you are looking for
  - Community
  - Subject matter experts
  - Aboriginal Community Controlled Health Organisations

Thank you

How to contact us:

**Enquiries**

[MOHCentreForAboriginalHealth@health.nsw.gov.au](mailto:MOHCentreForAboriginalHealth@health.nsw.gov.au)

**Completed AHIS**

[moh-ahis@health.nsw.gov.au](mailto:moh-ahis@health.nsw.gov.au)