

Accessing BHI data for research

Translational Research Grants Scheme

Tina Navin-Cristina, Lead Data Linkage and Access

March 2024

How to gain value from BHI information for grants applications

To strengthen your proposal, applications that focus on health service delivery need to consider and measure impact across four essentials of value including patient experience.

Measurement and evaluation of your research with access to quantitative and qualitative data.

Custom data and previously published analyses can inform your development of aims, research questions and hypotheses aligned to Aboriginal health, virtual care, rural and regional health, surgical innovation and models of care.

BHI reporting



BHI reports and information products are available at bhi.nsw.gov.au

NSW Patient Survey Program

Core content



**Patients
admitted
to hospital**

~19,000 respondents
87 hospitals



**Emergency
departments**

~22,000 respondents
77 hospitals



**Outpatient cancer
clinics**

~8,000 respondents
42 facilities



**Virtual Care
Survey**

~2,300 respondents



**Rural Hospital
Emergency Care
Patients**

~5,100 respondents
across 81 facilities,
55 represented



**Rural Hospital
Adult Admitted
Patients**

~5000 respondents
across 98 facilities,
55 represented

Surveys cover domains of patient experience, including:

Overall
satisfaction
and outcomes

Compassion,
respect and
kindness

Trust and
confidence

Involvement
in decision-
making

Timely and
coordinated
care

Information
and
communication

Safe,
comfortable
environment

Characteristics
and health
status

All BHI surveys and results are available at bhi.nsw.gov.au

NSW Patient Survey Program

Special topics



Aboriginal patient module

Included in admitted patient survey



Elective surgery module

Included in admitted patient survey



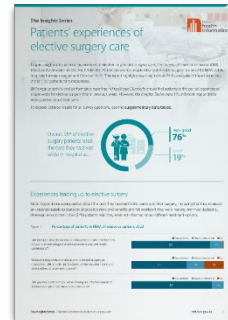
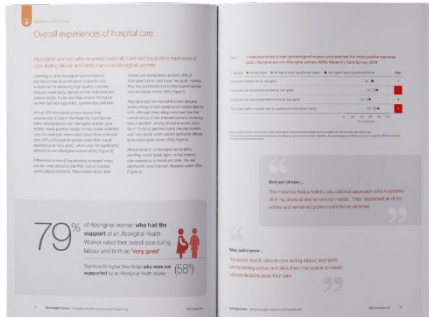
Ambulance module

Included in emergency department survey



Virtual Care module

Included in admitted patient survey



All BHI surveys and results are available at bhi.nsw.gov.au

How to get started

Explore information available online

The collage features several digital assets:

- Website Interface (Top Left):** Shows the 'health information' website with a navigation menu (About BHI, Reports, Patient surveys, Topics, Explore data, Media) and a featured article titled 'The Insights Series: Hospital care experiences for people who mainly speak a language other than English'.
- Survey Form (Top Right):** Displays the 'RURAL HOSPITAL EMERGENCY CARE PATIENT SURVEY' interface. It includes filters for 'Emergency department', 'Rural Hospital Emergency C...', '2023', and 'NSW'. The main content shows 'Overall satisfaction and outcomes' with a bar chart indicating 'Overall, how would you rate the ED health professionals who treated you?' with 'Very good' at 73%.
- Technical Supplement (Middle Left):** A grey cover for 'Healthcare Quarterly Technical Supplement' focusing on 'Emergency department, ambulance, admitted patients, seclusion and restraint, and elective surgery' for the period 'October to December 2022'.
- Survey Results Graphic (Middle Right):** A green graphic titled 'Survey results' and 'Patients' experiences of emergency care in small rural hospitals in 2023', featuring a smiling woman.
- Data Table (Bottom Right):** A detailed table with columns for 'Response rates', 'Respondent characteristics', and 'Comparison with 2019-19 results'. It lists various demographic and geographic categories with corresponding percentages and comparison values.

Record-level data for custom analyses

Survey data:

- Available in secure environment – SURE
 - Adult Admitted Patient Survey (AAPS) 2017 to latest available, Emergency Department Patient Survey (EDPS) 2017–18 to latest available and Virtual Care Survey 2020 to latest available.

Concurrent linkage:

- EDPS linked to concurrent attendance for 2020–21 and 2021–22 and AAPS linked to concurrent admission for 2020, 2021 and 2022.
- Linked to diagnosis codes, visit details and demographic information collected during the attendance.

Longitudinal linkage:

- Planned, and will extend on concurrent linkage.
- Possible through the Centre for Health Record Linkage (CHeReL).

Thank you

BHI-Enq@health.nsw.gov.au

Access the
researchers guide:

