

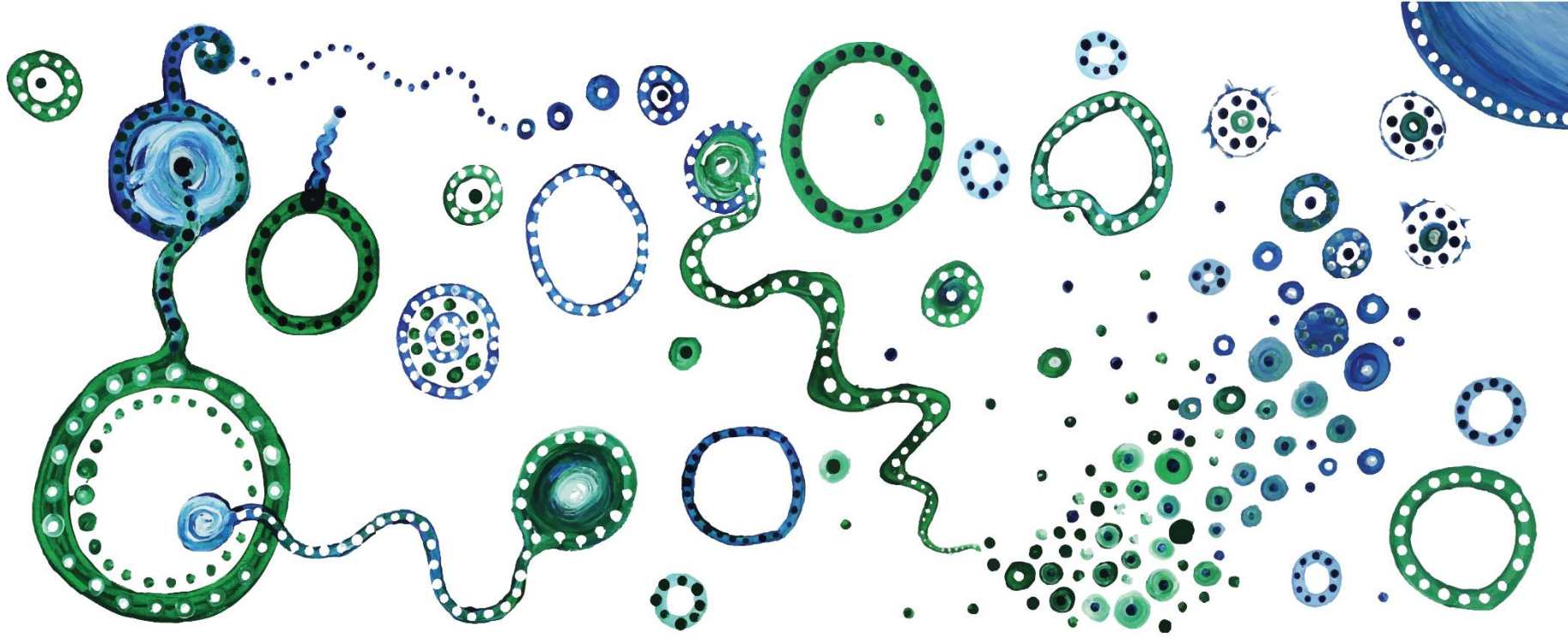
The Agency for Clinical Innovation

Presentation for the OHMR TRGS 2023 workshop

How to approach & partner with the NSW ACI



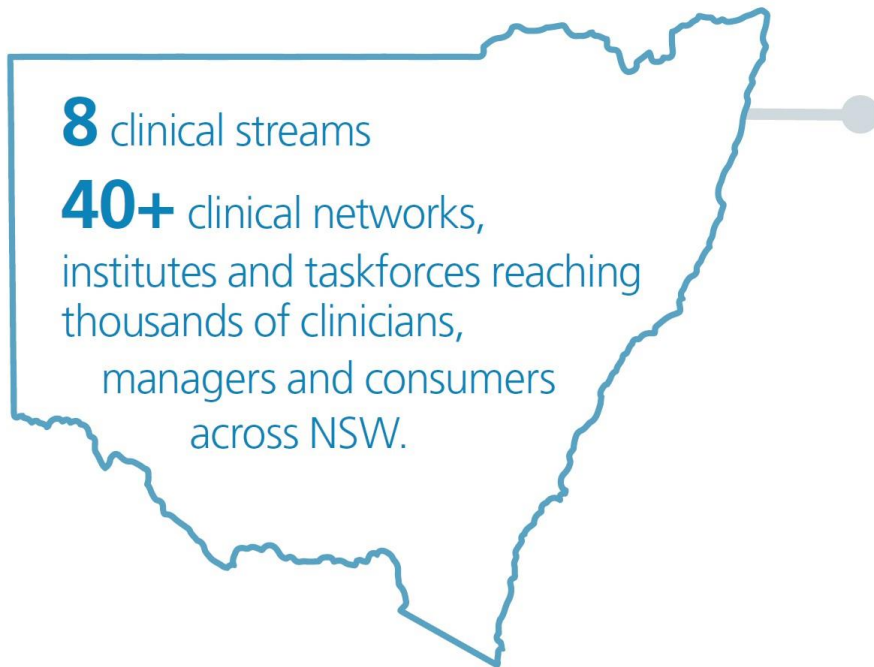
AGENCY FOR
**CLINICAL
INNOVATION**



ACI acknowledges the traditional owners of the land that we work on.

We pay our respect to Elders past and present and extend that respect to other Aboriginal peoples present here today.

Our core functions



Our core functions:

- Clinical guidelines and models of care
- Patient engagement and co-design
- Clinical evidence generation and mobilisation
- Clinical innovation and research
- Clinical redesign
- Implementation support
- Evaluation and capability development.

Our priority challenges (Strategic Plan 2023-2026)

- Integrating care for patients at the interface of hospital, primary, community and social care services
- Reducing unwarranted clinical variation and promoting high-value care
- Redesigning healthcare to facilitate the adoption of new health technologies, including new therapies and clinical processes
- Implementing virtual care and digitally-enabled models of care
- Supporting equity in access and outcomes of care
- Delivering person-centred and culturally appropriate care
- Fostering sustainability in healthcare.

Our structure – the 2 key directorates

CATALYST (Care Across the Lifecycle and Society) directorate:

- Aims to improve healthcare for patients throughout their lives and living environments.
- 4 streams: Child and Family Care; Acute, Aged and End of Life; Chronic and Long Term Care; Integrated Care and Aboriginal Health.

PRISM (Preserving and Restoring Interventions in Surgery and Medicine) directorate:

- Aims to positively impact the patients' journeys and trajectories. These networks expand the perspective and focus on care that is person-centred; looking after the entire person throughout, and beyond their hospital journey.
- 4 streams: Surgery and Anaesthesia; Interventional Medicine; Trauma, Pain and Rehabilitation; Intensive and Urgent Care.

Clinical Networks & Institutes

Aboriginal Chronic Conditions Network

Aged Health Network

Anaesthesia Perioperative Care Network

Blood & Marrow Transplant Network

Blood & Marrow Transplant Quality Management Service

Brain Injury Rehabilitation Network

Burn Injury Network

Cardiac Network

Chronic Care for Aboriginal People Program

Chronic Care Network

Clinical Genetics Network

Diabetes & Endocrine Network

Drug & Alcohol Network

Emergency Care Institute
NSW Agency for Clinical Innovation

Frailty Taskforce

Gastroenterology Network

Gynaecological Oncology Network

Institute of Trauma & Injury Management

Intellectual Disability Network

Intensive Care NSW

Maternity & Neonatal Network

Mental Health Network

Musculoskeletal Network

Nuclear Medicine Network

Nutrition Network

Ophthalmology Network

Paediatric Network

Pain Management Network

Palliative Care Network

Primary Healthcare

Radiology Network

Rehabilitation Network

Renal Network

Respiratory Network

Rural Health Network

State Spinal Cord Injury Service

Stroke Network

Surgical Services Taskforce

Telehealth

Transition Care Network

Urology Network

Violence Abuse & Neglect Network

Wound Initiative

Partnership roles

- Project advisory roles (e.g. project advisory committee).
- Connecting with clinicians, healthcare staff, & other parts of NSW Health.
- Assisting with developing project materials.
- Data.
- Implementation & dissemination plans.
- Other contributions as per ACI Networks expertise.

More information



- Visit our website for details about the ACI Networks, Taskforces, & Institutes: <https://www.aci.health.nsw.gov.au/networks> & contact the relevant Network Managers.
- For general research enquiries, please see <https://aci.health.nsw.gov.au/make-it-happen/research> or contact aci-research@health.nsw.gov.au.
- Proposals requesting partnerships from multiple agencies will be coordinated for review with those other agencies. Please approach all agencies as soon as possible.



AGENCY FOR
**CLINICAL
INNOVATION**

1 Reserve Rd
St Leonards NSW 2065

T + 61 2 9464 4666
F + 61 2 9464 4728

aci-info@health.nsw.gov.au
www.aci.health.nsw.gov.au

 [@nswaci](https://twitter.com/nswaci)