



eHealth

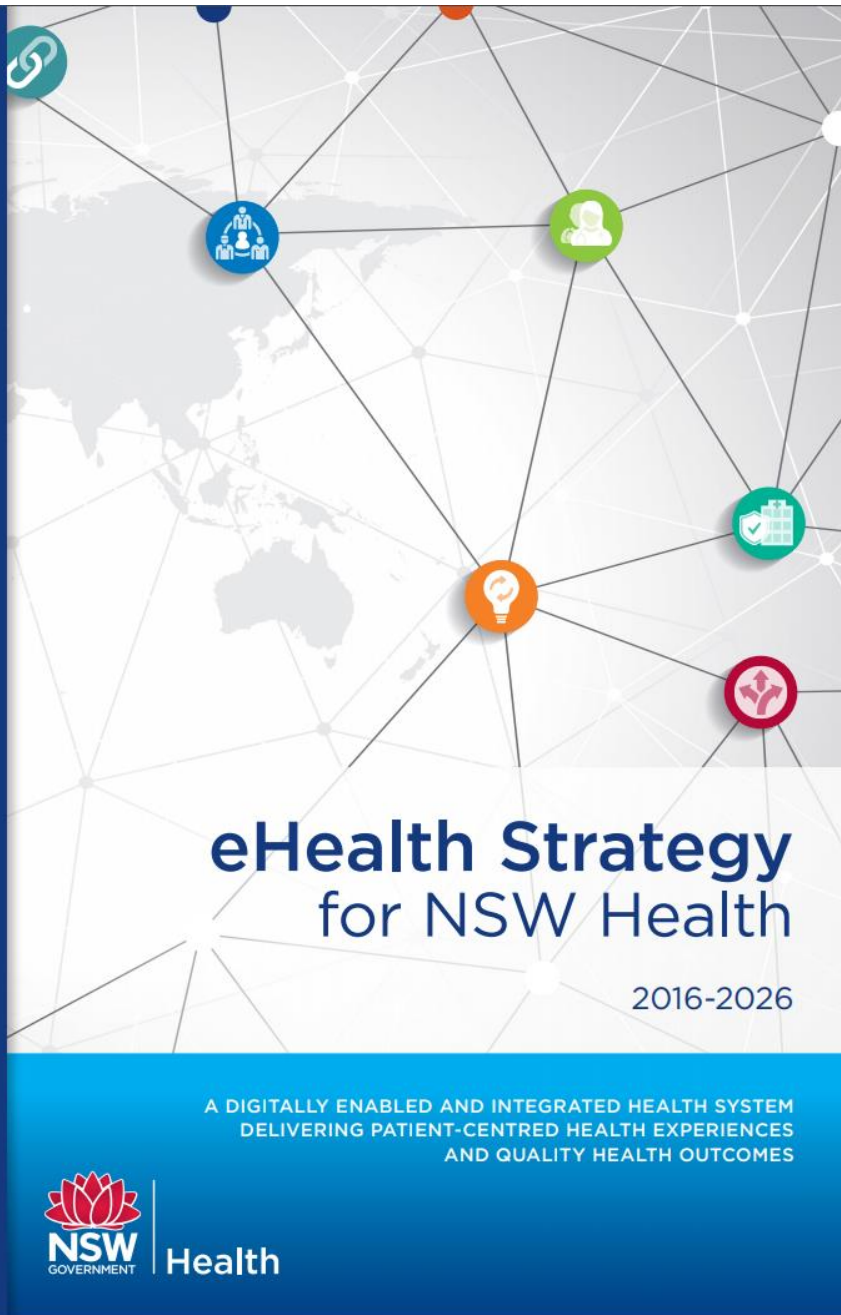
Partnering with eHealth NSW

The front door for digital Health research projects

Heidi Mueller
Data & Analytics Portfolio, eHealth NSW

16 June 2021





VISION:
A digitally enabled and integrated health system delivering patient centred health experiences and quality health outcomes

Organisations and health system performance is optimised and informed by eHealth.

Our people are assisted by eHealth to make effective decisions and in the delivery of integrated care.

Patients are well informed and supported by eHealth in achieving their health objectives.

Focus areas & examples

INNOVATION

CONSISTENT APPROACH TO FOSTERING IT ENABLED INNOVATION

Creating a Culture of Innovation and Collaboration
Coordination of ICT and Health Enabled Innovations

DATA AND ANALYTICS

ENHANCED DATA MANAGEMENT, ANALYTICS AND HEALTH INTELLIGENCE

Standardised Data Structures, Storage and Reporting
Enhanced Capture and Use of New Data Sources
Enhanced Data Mobilisation
Enhanced Population Health Intelligence
Enhanced Preventative Health Analytics
Enhanced Research and Continuous Learning

INFRASTRUCTURE, SECURITY AND INTELLIGENCE

ROBUST MINIMUM STANDARD FOR INFRASTRUCTURE, NETWORKS AND CYBER SECURITY

High Speed Clinical Grade Network
Wireless Services and Standards
Health Digital Identity Management
Security and Privacy Strategy
Government Data Centre Consolidation

ACCESS TO INFORMATION

ENHANCED PATIENT AND PROVIDER ACCESS TO DIGITAL HEALTH INFORMATION

Seamless Information Flow Between Core Systems
Workforce Access to Applications Anywhere Anytime
Highly Mobile and Intuitive Solutions

CORE CLINICAL SYSTEMS

INTEGRATED PAPER-LITE CORE CLINICAL INFORMATION SYSTEMS

Electronic Medical Records
HealtheNet
Diagnostic Solutions
Incident Management System

INTEGRATED CARE SOLUTIONS

FOSTERING EHEALTH SOLUTIONS THAT SUPPORT INTEGRATED CARE

Patient Identification and Selection
Patient Reported Measures
Patient and Provider Video Conferencing
Patient Health Education and Information Resources
Secure Messaging and eReferral Management
Shared Care Plans
Online Appointments
Remote Patient Monitoring

WORKFORCE AND BUSINESS MANAGEMENT SYSTEMS

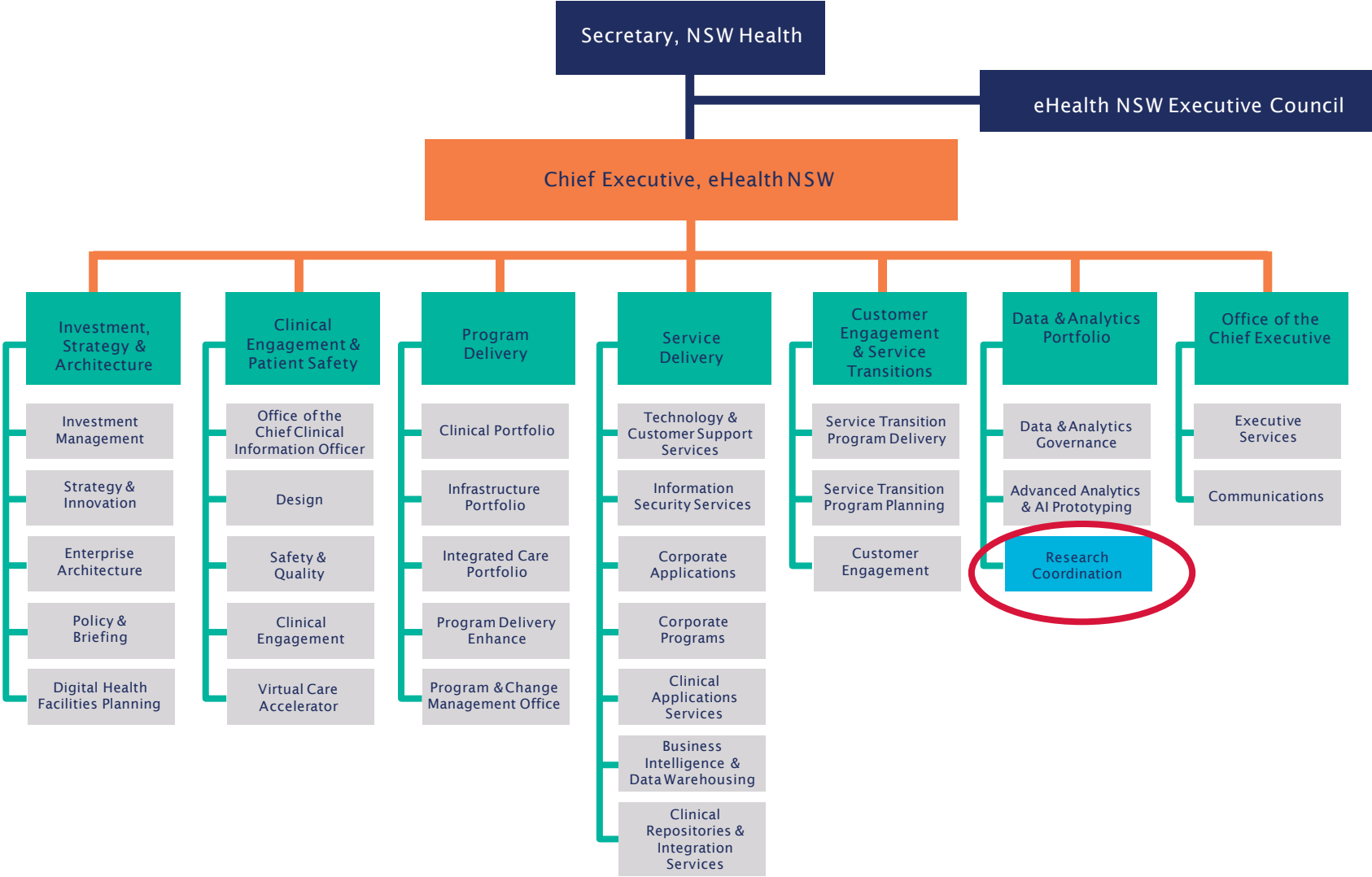
ENHANCED INFORMATION AND TOOLS TO FOSTER ORGANISATIONAL EFFECTIVENESS

Availability and Access to Workforce Data
Effective and Integrated Workforce Management Tools
Workforce Education and Professional Development Tools
Finance Lifecycle Management

Key Strategic developments in eHealth NSW



eHealth NSW - Structure



Why coordinate with eHealth NSW

PSAF

Privacy and Security Assurance Framework - helps programs and projects to eliminate or mitigate any potential risks and acts as an early assessment service which seeks to identify and influence every stage of a new system.

Expertise & Guidance

Expertise and guidance on statewide projects

Research & Implementation Partner

Support and endorsement on grant applications

Enterprise architecture review

Provides technical merit to ensure that selected technology and software tools can be implemented and supported within the enterprise.

Data

Data integration, the need to utilise data across multiple LHDs, the need to use technology, or request changes to the EMR as part of your project.

eHealth NSW Research Function



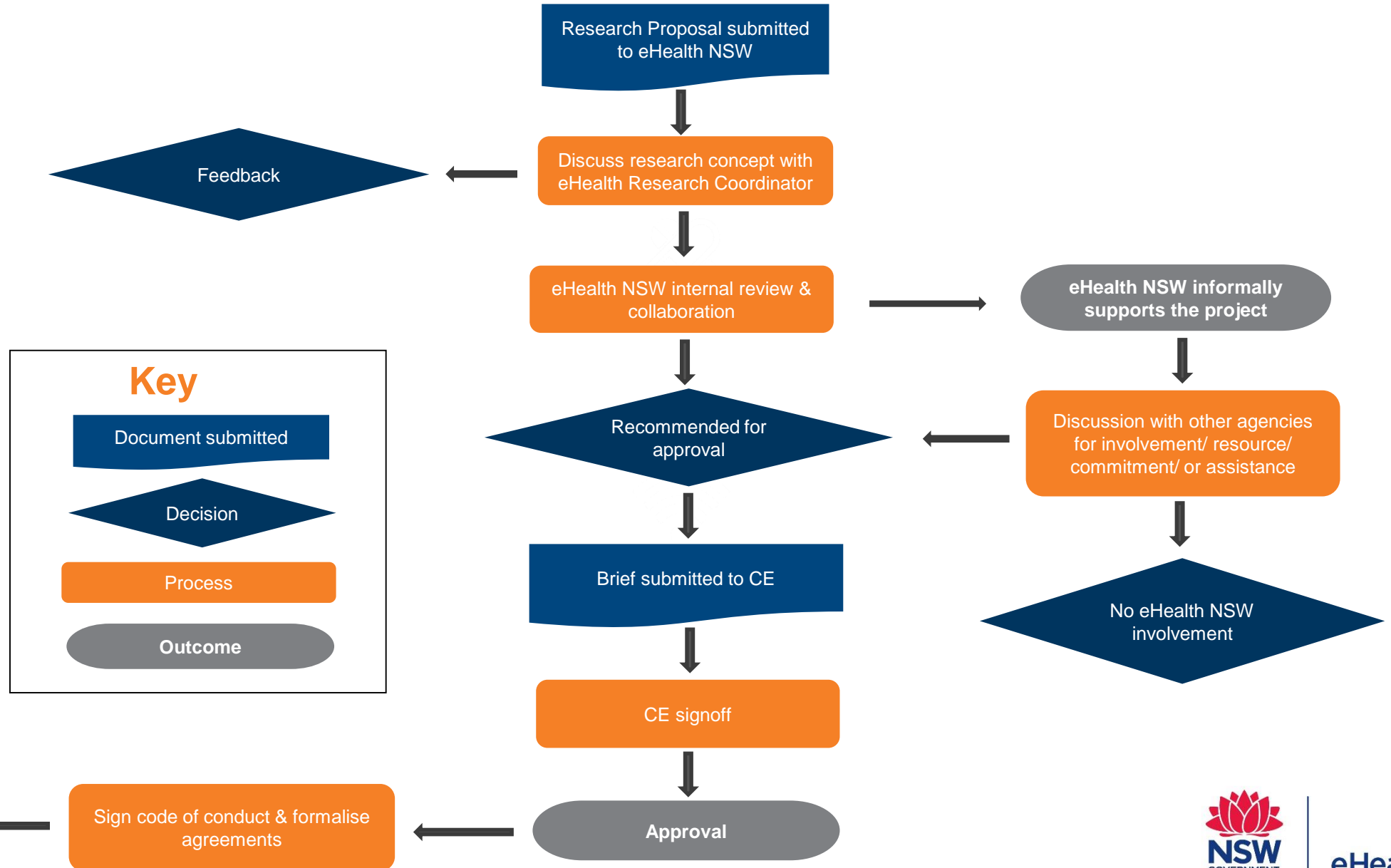
Key Partners

- The Office of Health and Medical Research
- Local Health Districts and Specialty Health Networks
- The Agency for Clinical Innovation (ACI)
- Clinical Excellence Commission
- Ministry of Health (MOH)
- Local ICT & Chief Information Officer (CIOs) at Local Health Districts
- Health service administrators
- Universities
- Clinicians
- Researchers

Key Focus Areas

- The research must add value and benefit the system.
- The project must directly align with the priorities of eHealth NSW (eHealth Strategy for NSW Health, NSW Health Analytics Framework, NSW Health Strategic Priorities, and The Premier's Priorities).
- The application must demonstrate collaborative engagement and consultation with relevant networks and stakeholders where applicable.
- Completed feasibility trial and/or pilot project demonstrating value, before considering multi-site state-wide roll out and/or broad ICT integration.

External Research Review and Approval Flowchart



Submitting a Research Request

Research requests

We work with NSW Health staff, external researchers and partner organisations to undertake research in partnership with eHealth NSW.

eHealth NSW uses an operating model, including key criteria and principles, with consideration on value and benefits for the system, as well as how research could be translated into practice. With these considerations, eHealth NSW endorses and partners with particular projects.

“What we are doing is coordinating, enabling, and providing standardised governance and reporting,” said Lachlan Rudd, Director of Data and Analytics, eHealth NSW.

For research-related enquiries, please contact Heidi Mueller, Research Coordinator for eHealth NSW’s Data and Analytics portfolio: EHNSW-Research@health.nsw.gov.au

- ▶ [Eligibility Criteria](#)
- ▶ [Endorsement by eHealth NSW](#)
- ▶ [Application process overview](#)
- ▶ [Research Conduct](#)
- ▶ [Current research projects](#)
- ▶ [Frequently asked questions](#)
- ▶ [Recent opportunities](#)

Submit a request

Submitting a Research Request



You will be asked to complete a set of questions regarding the project, then attach a protocol and/or draft grant application.



eHealth

eHealth NSW Research Request Form

Submit a Research Request

...

* Required

1. Full Name *

2. Email address *

3. Best contact number *

4. Project Title *

5. Host Organisation *

Thank you



Discussion and Questions



Further Information

Heidi Mueller

Research Coordinator, Data & Analytics Portfolio

Heidi.Mueller@health.nsw.gov.au

ehealth.nsw.gov.au