

Value based healthcare

Ashlee Quarmby
Principal Project & Policy Officer
Strategy and System Priorities

NSW Health TRG Round 6 Webinar
Wednesday 16 June 2021



| Why value based healthcare?

Healthcare worldwide is changing with **rising health costs** and **new technologies**

The **needs** and **expectations** of patients, carers, clinicians and communities **continue to grow**



There is increasing **demand** and **complexity** of delivering care

Patients are taking a **more active role** in their healthcare and choices about what matters to them

The NSW Health vision

A sustainable health system that delivers outcomes that matter to patients and the community, is personalised, invests in wellness and is digitally enabled



What do we mean by value based healthcare in NSW

In NSW value based healthcare means continually striving to deliver care that improves:

Health outcomes that matter to patients

Experiences of receiving care

Experiences of providing care

Effectiveness and efficiency of care

Considering value based healthcare at different levels

Individual



Am I providing care that delivers the outcomes and experiences that matter most to the patient?

Service



Are we using available resources optimally to improve outcomes?

System



Are we allocating resources and creating the environment that enables the best outcomes?

Value based healthcare in NSW

NSW GOVERNMENT Health

Vision
A sustainable health system that delivers outcomes that matter to patients and the community, is personalised, invests in wellness and is digitally enabled

In NSW value based healthcare means continually striving to deliver care that improves:

- Health outcomes that matter to patients and the community
- Experiences of receiving care
- Experiences of providing care
- Effectiveness and efficiency of care

Considering value based healthcare at different levels

Individual
Am I providing care that delivers the outcomes and experiences that matter most to the patient?

Service
Are we using available resources optimally to improve outcomes?

System
Are we allocating resources and creating the environment that enables the best outcomes?

Accelerating initiatives and enablers

Enablers

- Patient and community engagement**
Engage patients and communities to understand what matters and support their empowerment
- Measurement and evaluation**
Improve our ability to measure and evaluate the impact our care is making to people and the system
- Research and innovation**
Support and harness health and medical research and innovation
- Delivery organisations**
Working with a range of providers across settings to deliver care where and how the best outcomes and experiences are achieved

Statewide priority programs

- Leading Better Value Care**
Identifying and scaling evidence based initiatives statewide for specific conditions
- Integrating Care**
Statewide strategies to coordinate care and processes within the health system and with other service providers
- Commissioning for Better Value**
Shifting focus of non-clinical and clinical support projects from outputs to outcomes
- Collaborative Commissioning**
Whole-of-system approach to incentivise local autonomy and accountability for delivering patient-centred and outcome-focused care in the community

Enablers

- People, culture, governance and capability**
Achieve a FIT for Purpose workforce for now and the future
- Digital health and analytics**
Use analytics to better support decision making and technology to transform the way health care is delivered
- Funding and purchasing**
Shift the focus from activity to outcomes
- Clinical leadership and engagement**
Managers and clinicians working together to lead evidence based change

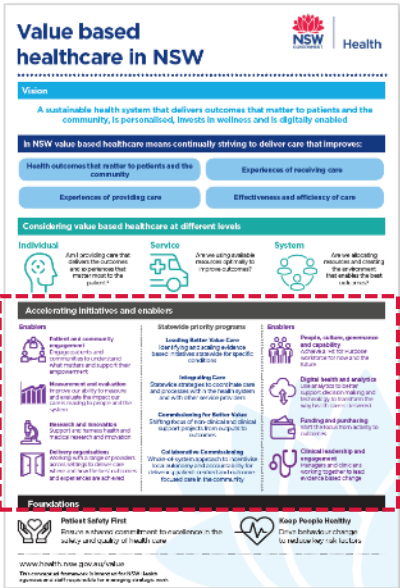
Foundations

- Patient Safety First**
Ensure a shared commitment to excellence in the safety and quality of health care
- Keep People Healthy**
Drive behaviour change to reduce key risk factors

www.health.nsw.gov.au/value
This conceptual framework is intended for NSW Health agencies and staff responsible for managing strategic work

NSW Health's approach to move towards value based healthcare

Statewide priority programs and enablers



Enablers



Patient and community engagement
Engage patients and communities to understand what matters and support their empowerment



Measurement and evaluation
Improve our ability to measure and evaluate the impact our care is making to people and the system



Research and innovation
Support and harness health and medical research and innovation



Delivery organisations
Working with a range of providers across settings to deliver care where and how the best outcomes and experiences are achieved

Statewide priority programs

Leading Better Value Care
Identifying and scaling evidence based initiatives statewide for specific conditions

Integrating Care
Statewide strategies to coordinate care and processes within the health system and with other service providers

Commissioning for Better Value
Shifting focus of non-clinical and clinical support projects from outputs to outcomes

Collaborative Commissioning
Whole-of-system approach to incentivise local autonomy and accountability for delivering patient-centred and outcome-focused care in the community

Enablers



People, culture, governance and capability
Achieve a 'Fit for Purpose' workforce for now and the future



Digital health and analytics
Use analytics to better support decision making and technology to transform the way health care is delivered



Funding and purchasing
Shift the focus from activity to outcomes



Clinical leadership and engagement
Managers and clinicians working together to lead evidence based change

| Demonstrating the four essentials of value



Value Based Care

In line with NSW Health's long-term strategic priority to move from a focus on outputs to a focus on outcomes, TRGS Round 6 applicants must demonstrate how their proposals will support the delivery of value-based healthcare.

Value based healthcare is an approach for organising health systems to improve health outcomes and experiences for patients and maximise value for the system.

All TRGS applications are encouraged to demonstrate how their projects will lead to improvements across the four -essentials of value:

- health outcomes that matter to patients
- the experience of receiving care
- the experience of providing care
- the effectiveness and efficiency of care.

Health outcomes
that matter to patients

Experiences of
receiving care

Experiences of
providing care

Effectiveness and
efficiency of care

| Measuring and evaluating impact across the four essentials of value



TRGS applications should describe:

- how they intend to measure and evaluate their impact across the all four essentials of value
- how new models of care or processes can be sustainably scaled and embedded over time as business as usual across the system.

Health outcomes
that matter to patients

Experiences of
receiving care

Experiences of
providing care

Effectiveness and
efficiency of care

Find out more on the NSW Health website



www.health.nsw.gov.au/value

