

# The Agency for Clinical Innovation



AGENCY FOR  
**CLINICAL  
INNOVATION**

---

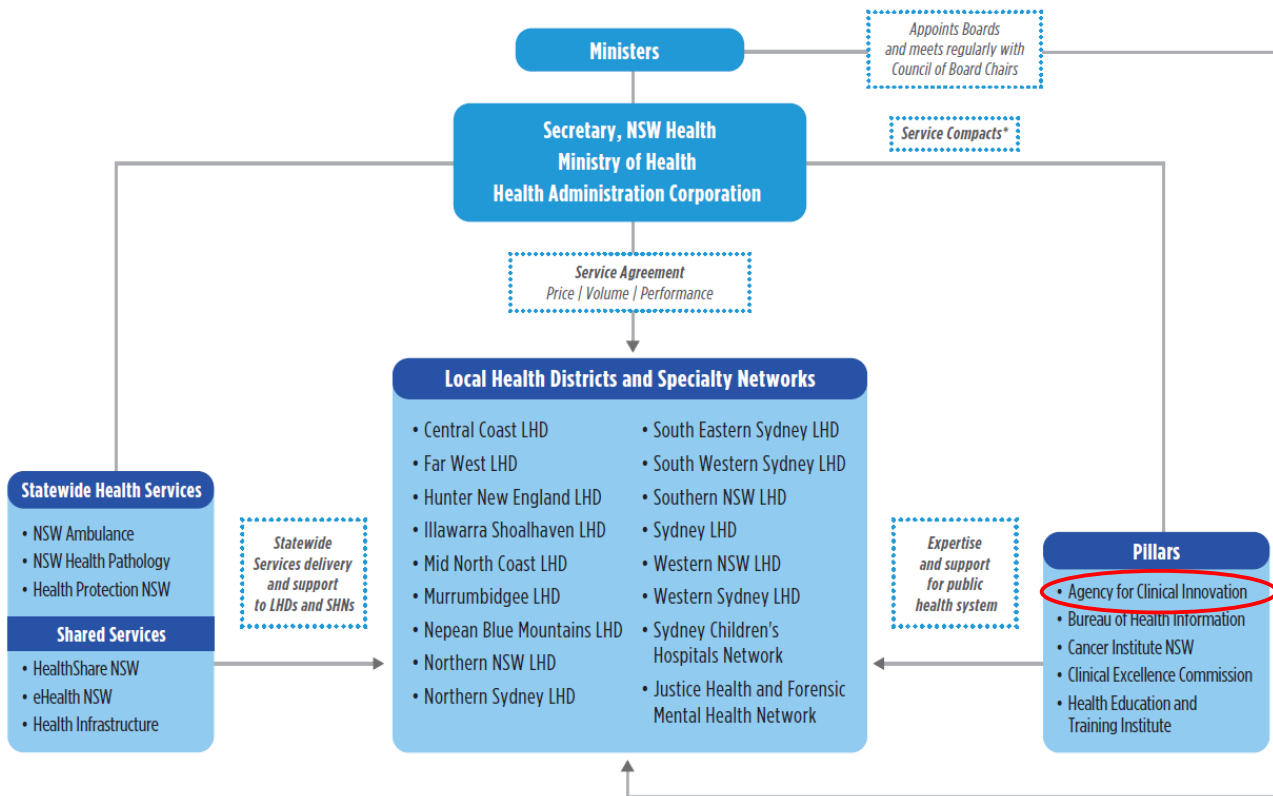
# We are the lead agency for innovation in clinical care.

---

We bring patients, clinicians  
and managers together to  
support the innovation,  
design and implementation  
of healthcare in NSW.



# The NSW health system



St Vincent's Health Network is an affiliated health organisation.

\*Service Compact – Instrument of engagement detailing service responsibilities and accountabilities.

**Our vision is to create the future of  
healthcare, and healthier futures for the  
people of NSW.**

# Our core functions



**8** clinical streams

**39** clinical networks, institutes  
and taskforces reaching  
thousands of clinicians,  
managers and consumers  
across NSW.

## Our core functions:

- Clinical guidelines and models of care
- Patient engagement and co-design
- Clinical evidence generation and mobilisation
- Clinical innovation and research
- Clinical redesign
- Implementation support
- Evaluation and capability development.

**We focus on complex challenges and address them with innovations that are:**

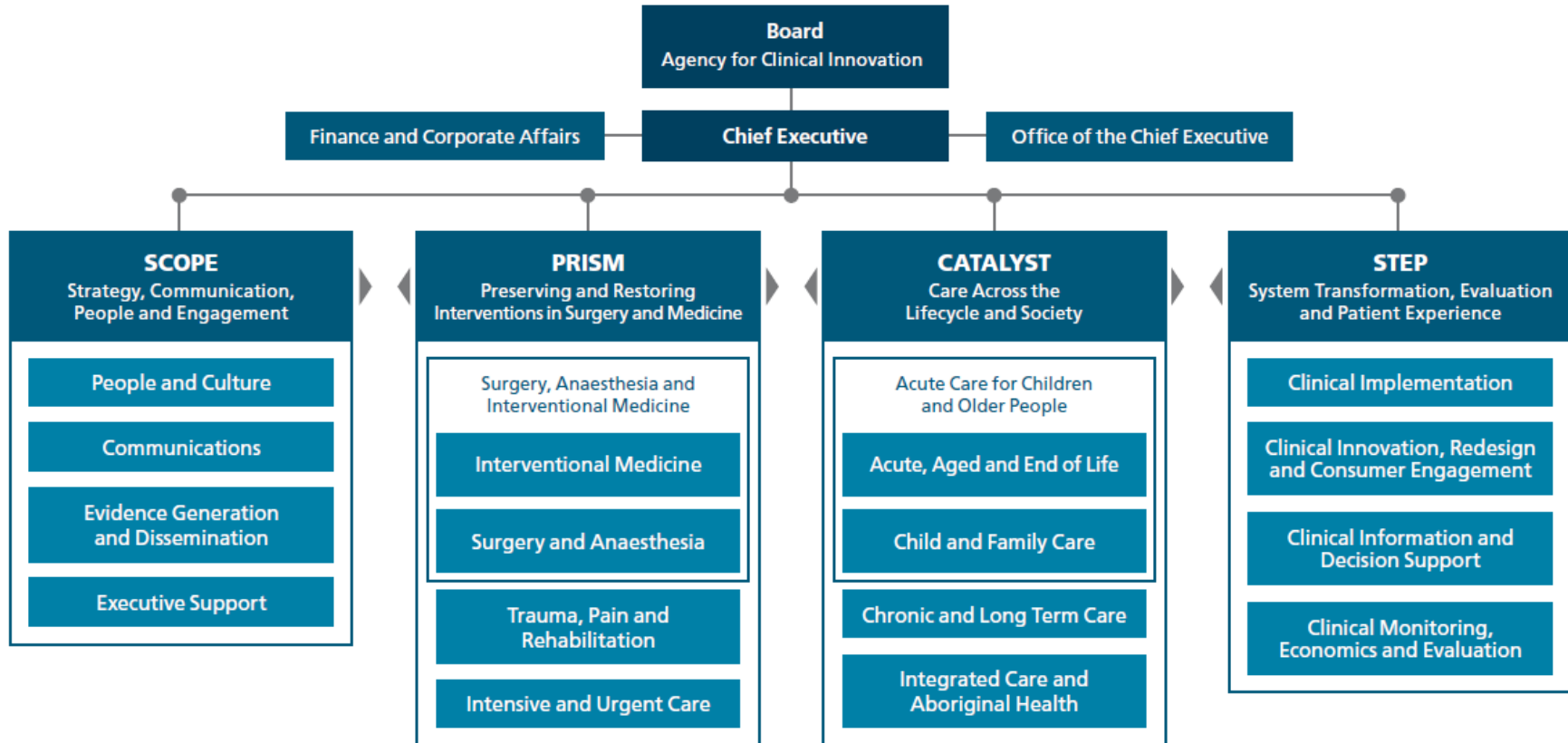
- **person-centred** – we engage consumers as partners to redesign healthcare
- **clinically-led** – we draw on clinical leadership to build and drive improvements that will change practice
- **evidence-based** – we capture emerging innovations, assess the evidence and evaluate their transformative potential
- **value-driven** – we demonstrate value to patients and providers, and deliver outcomes for the system.

# Our focus on complex system challenges



- **integrating care** at the interface of hospital, primary, community and social care services
- delivering healthcare informed by **shared-decision making and co-design**
- reducing low-value clinical care and **increasing better value care**
- improving the **experiences of care for Aboriginal people** and culturally diverse communities
- creating new models of care for people living with **mental and physical co-morbidities**
- reducing over-diagnosis and **over-treatment in frail and older people**
- implementing **novel diagnostic & therapeutic technologies** in clinical care
- **embedding analytic tools** to support clinical decisions and reflective practice.

# Our structure





# Clinical Networks & Institutes



Aboriginal Chronic Conditions Network

Aged Health Network

Anaesthesia Perioperative Care Network

Blood and Marrow Transplant Network

Blood and Marrow Transplant Quality Management Service

Brain Injury Rehabilitation Network

Burn Injury Network

Cardiac Network

Chronic Care for Aboriginal People Program

Chronic Care Network

Clinical Genetics Network

Diabetes and Endocrine Network

Drug and Alcohol Network

Emergency Care Institute

Gastroenterology Network

Gynaecological Oncology Network

Institute of Trauma and Injury Management

Intellectual Disability Network

Intensive Care NSW

Mental Health Network

Musculoskeletal Network

Nuclear Medicine Network

Nutrition Network

Ophthalmology Network

Paediatric Network

Pain Management Network

Palliative Care Network

Primary Care Institute

Radiology Network

Rehabilitation Network

Renal Network

Respiratory Network

Rural Health Network

State Spinal Cord Injury Service

Stroke Network

Surgical Services Taskforce

Telehealth

Transition Care Network

Urology Network

Violence and Neglect Network

# More information



Visit our website for details about the ACI Networks, Taskforces, and Institutes:

<https://www.aci.health.nsw.gov.au/networks>